

STRADB Polyclonal Antibody

Catalog number: 10688-1-AP

Size: 15 µg/150 µl

Source: Rabbit

Isotype: IgG

Synonyms:

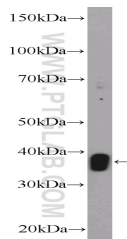
STRADB; ALS2CR2, CALS 21,

ILP interacting protein, ILPIP,

ILPIPA, PAPK, PRO1038,

Pseudokinase ALS2CR2, STRAD

beta, STRADB



Raji cells were subjected to SDS PAGE followed by western blot with 10688-1-AP (STRADB Antibody) at dilution of 1:300

Background

The 418 amino acid STRADB protein, which is also named as ALS2CR2 and ILPIP, contains a putative N-terminal ATP-binding site, a protein kinase domain, and several C-terminal phosphorylation sites. STRADB potentiates the antiapoptotic activity of XIAP by enhancing XIAP-mediated activation of JNK1 and other JNK family members, but not by modulating XIAP-mediated caspase inhibition. This protein has 3 isoforms produced by alternative splicing with the MW of 47 kDa, 42 kDa and 31 kDa.

Applications

Tested applications:	ELISA, WB
Species specificity:	Human, Mouse, Rat; other species not tested.
Calculated STRADB MW:	47 kDa
Observed STRADB MW:	28-31 kDa; 38-42 kDa
Positive WB detected in	Raji cells, mouse heart tissue
Recommended dilution:	WB: 1:200-1:1000

Application key: WB = Western blotting, IHC = Immunohistochemistry, IF = Immunofluorescence, IP = Immunoprecipitation

Immunogen information

Immunogen:	Ag1040
GenBank accession number:	BC008302
Gene ID (NCBI):	55437
Full name:	STE20-related kinase adaptor beta

Product information

Purification method:	Antigen affinity purification
Storage:	PBS with 0.1% sodium azide and 50% glycerol pH 7.3. Store at -20°C.