

PSMB1 Polyclonal Antibody

Catalog number: 11749-1-AP

Size: 45 µg/150 µl

Source: Rabbit

Isotype: IgG

Synonyms:

PSMB1; 20S proteasome,

FLJ25321, HC5, KIAA1838,

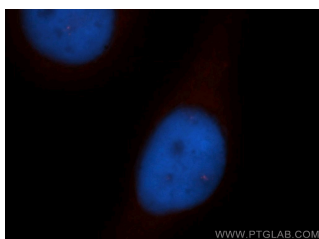
Macropain subunit C5, PMSB1,

Proteasome component C5,

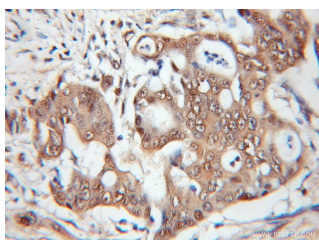
Proteasome gamma chain,

Proteasome subunit beta type

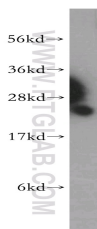
1, PSC5, PSMB1



Immunofluorescent analysis of HeLa cells, using PSMB1 antibody 11749-1-AP at 1:25 dilution and Rhodamine-labeled goat anti-rabbit IgG (red). Blue pseudocolor = DAPI (fluorescent DNA dye).



Immunohistochemical of paraffin-embedded human colon cancer using 11749-1-AP(PSMB1 antibody) at dilution of 1:50 (under 10x lens)



HeLa cells were subjected to SDS PAGE followed by western blot with 11749-1-AP(PSMB1 antibody) at dilution of 1:500

Background

PSMB1(Proteasome subunit beta type-1) is also named as PSC5 and belongs to the peptidase T1B family. The proteasome is a multicatalytic proteinase complex which is characterized by its ability to cleave peptides with Arg, Phe, Tyr, Leu, and Glu adjacent to the leaving group at neutral or slightly basic pH. The gene encodes a 241 amino acid protein with a 28 amino acid propeptide and two glycosylation sites.

Applications

Tested applications:	ELISA, WB, IHC, IF
Cited applications:	IHC, WB
Species specificity:	Human, Mouse, Rat; other species not tested.
Cited species:	Mouse, rat
Calculated PSMB1 MW:	241aa, 26 kDa
Observed PSMB1 MW:	25kd
Positive WB detected in	HeLa cells, human brain tissue
Positive IHC detected in	Human colon cancer tissue
Positive IF detected in	HeLa cells
Recommended dilution:	WB: 1:500-1:5000 IHC: 1:20-1:200 IF: 1:10-1:100

Application key: WB = Western blotting, IHC = Immunohistochemistry, IF = Immunofluorescence, IP = Immunoprecipitation

Immunogen information

Immunogen:	Ag2345
GenBank accession number:	BC020807
Gene ID (NCBI):	5689
Full name:	Proteasome (prosome, macropain) subunit, beta type, 1

Product information

Purification method:	Antigen affinity purification
Storage:	PBS with 0.1% sodium azide and 50% glycerol pH 7.3. Store at -20°C.