

## EAF2 Polyclonal Antibody

Catalog number: 11172-1-AP

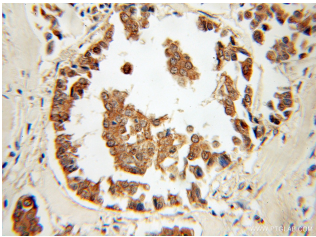
Size: 34 µg/150 µl

Source: Rabbit

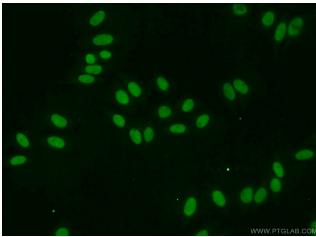
Isotype: IgG

Synonyms:

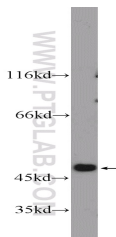
EAF2; BM040, EAF2, ELL associated factor 2, TRAITS, U19



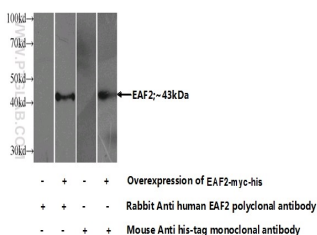
Immunohistochemical of paraffin-embedded human breast cancer using 11172-1-AP (EAF2 antibody) at dilution of 1:50 (under 10x lens)



Immunofluorescent analysis of HepG2 cells using 11172-1-AP (EAF2 Antibody) at dilution of 1:50 and Alexa Fluor 488-conjugated AffiniPure Goat Anti-Rabbit IgG(H+L)



mouse kidney tissue were subjected to SDS PAGE followed by western blot with 11172-1-AP (EAF2 Antibody) at dilution of 1:300



Transfected HEK-293 cells were subjected to SDS PAGE

### Background

ELL associated factor 1 and ELL associated factor 2 (EAF1/2 factors) are reported to play important roles in tumor suppression and embryogenesis. The tumor suppressor EAF2 is regulated by androgen signaling and associated with prostate cancer. Eaf factors have been revealed to modulate mesoderm and neural patterning by inhibiting canonical Wnt signaling, and high activity of canonical Wnt/ $\beta$ -catenin is revealed in eafs morphants (PMID: 23364330). Catalog#11172-1-AP is a rabbit polyclonal antibody raised against the full-length of human EAF2.

### Applications

Tested applications:	ELISA, IHC, WB, IF
Species specificity:	Human, Mouse, Rat; other species not tested.
Calculated EAF2 MW:	42 kDa
Observed EAF2 MW:	45 kDa
Positive WB detected in	Mouse kidney tissue, Transfected HEK-293 cells
Positive IHC detected in	Human breast cancer tissue
Positive IF detected in	HepG2 cells
Recommended dilution:	WB: 1:200-1:1000 IHC: 1:20-1:200 IF: 1:20-1:200

Application key: WB = Western blotting, IHC = Immunohistochemistry, IF = Immunofluorescence, IP = Immunoprecipitation

### Immunogen information

Immunogen:	Ag1637
GenBank accession number:	BC014209
Gene ID (NCBI):	55840
Full name:	ELL associated factor 2

### Product information

Purification method:	Antigen affinity purification
Storage:	PBS with 0.1% sodium azide and 50% glycerol pH 7.3. Store at -20°C.

followed by western blot with  
11172-1-AP( EAF2 Antibody)  
at dilution of 1:500