

MAB21L2 Polyclonal Antibody

Catalog number: 10971-1-AP

Size: 37 µg/150 µl

Source: Rabbit

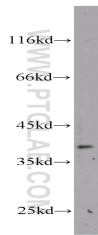
Isotype: IgG

Synonyms:

MAB21L2; FLJ31103, mab 21

like 2 (C. elegans), MAB21L2,

Protein mab 21 like 2



mouse brain tissue were subjected to SDS PAGE followed by western blot with 10971-1-AP(MAB21L2 antibody) at dilution of 1:200

Background

Mab-21 gene has been identified as a critical component required for sensory organ identity establishment in *Caenorhabditis elegans*. Mab21l1 and Mab21l2 paralogs have widespread and dynamic expression patterns during vertebrate development. Depletion of Mab21l1 and Mab21l2 messages in mouse embryo arrests axial turning, and impairs notochord and neural tube differentiation. Human MAB21L2 gene encodes mab-21-like 2 protein belonging to the mab-21 family. The Mab21l2-deficient mice have defects in eye and body wall formation, indicating that Mab21l2 plays crucial roles in retina and in ventral body wall formation. MAB21L2 plays a crucial role in both heart and liver development during mouse embryogenesis. This antibody is supposed to recognize both MAB21L2 and its homolog MAB21L1.

Applications

Tested applications:	ELISA, WB
Species specificity:	Human,Mouse,Rat; other species not tested.
Calculated MAB21L2 MW:	41 kDa
Observed MAB21L2 MW:	40 kDa
Positive WB detected in	Mouse brain tissue
Recommended dilution:	WB: 1:200-1:1000

Application key: WB = Western blotting, IHC = Immunohistochemistry, IF = Immunofluorescence, IP = Immunoprecipitation

Immunogen information

Immunogen:	Ag1423
GenBank accession number:	BC009983
Gene ID (NCBI):	10586
Full name:	Mab-21-like 2 (C. elegans)

Product information

Purification method:	Antigen affinity purification
Storage:	PBS with 0.1% sodium azide and 50% glycerol pH 7.3. Store at -20°C.