

MCM10 Polyclonal Antibody

Catalog number: 12251-1-AP

Size: 28 µg/150 µl

Source: Rabbit

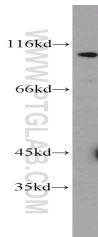
Isotype: IgG

Synonyms:

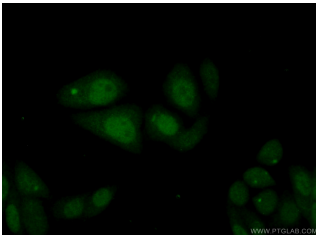
MCM10; CNA43, DNA43,

HsMCM10, MCM10, PRO2249,

Protein MCM10 homolog



HepG2 cells were subjected to SDS PAGE followed by western blot with 12251-1-AP (MCM10 antibody) at dilution of 1:300



Immunofluorescent analysis of (10% Formaldehyde) fixed HepG2 cells using 12251-1-AP (MCM10 Antibody) at dilution of 1:50 and Alexa Fluor 488-conjugated AffiniPure Goat Anti-Rabbit IgG(H+L)

Background

MCM10, also named as HsMCM10, belongs to the MCM10 family. It acts as a replication initiation factor that brings together the MCM2-7 helicase and the DNA polymerase alpha/primase complex in order to initiate DNA replication. Additionally, it plays a role in preventing DNA damage during replication and is essential for the integrity of the RECQ4–MCM replicative helicase complex. It mediates RECQ4 association with MCM2-7 helicase complex during DNA replication.

Applications

Tested applications: ELISA, WB, IF

Cited applications: WB

Species specificity: Human, Mouse; other species not tested.

Cited species: Human

Calculated MCM10 MW: 874aa, 97 kDa

Observed MCM10 MW: 97-105 kDa

Positive WB detected in: HepG2 cells

Positive IF detected in: HepG2 cells

Recommended dilution: WB: 1:200-1:2000

IF: 1:50-1:500

Application key: WB = Western blotting, IHC = Immunohistochemistry, IF = Immunofluorescence, IP = Immunoprecipitation

Immunogen information

Immunogen: Ag2899

GenBank accession number: BC009108

Gene ID (NCBI): 55388

Full name: Minichromosome maintenance complex component 10

Product information

Purification method: Antigen affinity purification

Storage: PBS with 0.1% sodium azide and 50% glycerol pH 7.3. Store at -20°C.