

SLC27A2 Polyclonal Antibody

Catalog number: 14048-1-AP

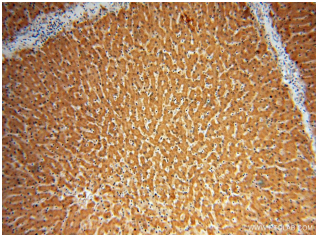
Size: 31 µg/150 µl

Source: Rabbit

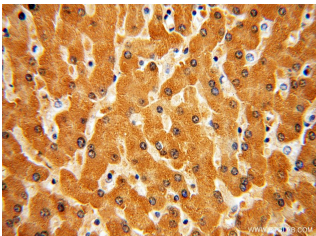
Isotype: IgG

Synonyms:

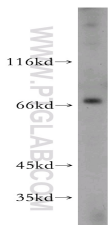
SLC27A2; ACSVL1, FACVL1, FATP 2, FATP2, Fatty acid transport protein 2, hFACVL1, HsT17226, SLC27A2, THCA CoA ligase, VLACS, VLCS



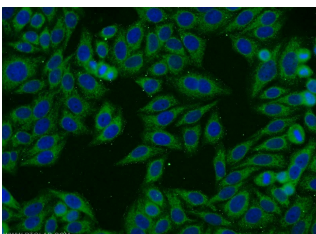
Immunohistochemical of paraffin-embedded human liver using 14048-1-AP(SLC27A2 antibody) at dilution of 1:50 (under 10x lens)



Immunohistochemical of paraffin-embedded human liver using 14048-1-AP(SLC27A2 antibody) at dilution of 1:50 (under 40x lens)



HepG2 cells were subjected to SDS PAGE followed by western blot with 14048-1-AP(SLC27A2 antibody) at dilution of 1:500



Applications

Tested applications:	ELISA, WB, IHC, IF, IP
Species specificity:	Human, Mouse, Rat; other species not tested.
Calculated SLC27A2 MW:	567aa, 65 kDa
Observed SLC27A2 MW:	70 kDa
Positive WB detected in	HepG2 cells
Positive IP detected in	HepG2 cells
Positive IHC detected in	Human liver tissue
Positive IF detected in	HepG2 cells
Recommended dilution:	WB: 1:200-1:2000
	IP: 1:200-1:2000
	IHC: 1:20-1:200
	IF: 1:10-1:100

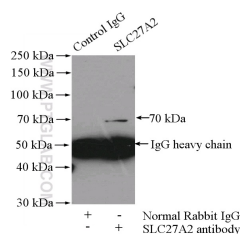
Application key: WB = Western blotting, IHC = Immunohistochemistry, IF = Immunofluorescence, IP = Immunoprecipitation

Immunogen information

Immunogen:	Ag5217
GenBank accession number:	BC057770
Gene ID (NCBI):	11001
Full name:	Solute carrier family 27 (fatty acid transporter), member 2

Product information

Purification method:	Antigen affinity purification
Storage:	PBS with 0.02% sodium azide and 50% glycerol pH 7.3. Store at -20°C.



Immunofluorescent analysis
of HepG2 cells using 14048-1-
AP(SLC27A2 Antibody) at
dilution of 1:25 and Alexa
Fluor 594-conjugated
AffiniPure Goat Anti-Rabbit
IgG(H+L)

IP Result of anti-SLC27A2
(IP:14048-1-AP, 4ug;
Detection:14048-1-AP 1:500)
with HepG2 cells lysate
3200ug.