

SEC61G Polyclonal Antibody

Catalog number: 11147-2-AP

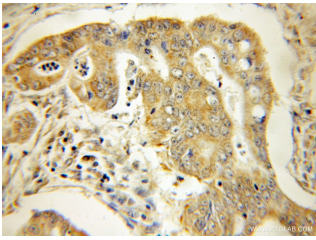
Size: 45 µg/150 µl

Source: Rabbit

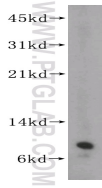
Isotype: IgG

Synonyms:

SEC61G; Sec61 gamma subunit,
SEC61G, SSS1



Immunohistochemical of paraffin-embedded human colon cancer using 11147-2-AP(SEC61G antibody) at dilution of 1:50 (under 10x lens)



HEK-293 cells were subjected to SDS PAGE followed by western blot with 11147-2-AP(SEC61G antibody) at dilution of 1:400

Background

SEC61G is a subunit of the SEC61 complex, which also contains alpha (SEC61A) and beta (SEC61B) subunits. The SEC61 complex is the central component of the protein translocation apparatus on the endoplasmic reticulum membrane. The gene of SEC61G maps to chromosome 7p11.2, and encodes a 68-amino acid single-pass membrane protein. This antibody can recognize endogenous SEC61G that migrates at a molecular mass of ~8 kDa.

Applications

Tested applications:	ELISA, WB, IHC
Cited applications:	IHC, WB
Species specificity:	Human, Mouse, Rat; other species not tested.
Cited species:	Human, mouse, rat
Calculated SEC61G MW:	7.7 kDa
Observed SEC61G MW:	7.7 kDa
Positive WB detected in	HEK-293 cells
Positive IHC detected in	Human colon cancer tissue
Recommended dilution:	WB: 1:200-1:2000 IHC: 1:20-1:200

Application key: WB = Western blotting, IHC = Immunohistochemistry, IF = Immunofluorescence, IP = Immunoprecipitation

Immunogen information

Immunogen:	Ag1624
GenBank accession number:	BC009480
Gene ID (NCBI):	23480
Full name:	Sec61 gamma subunit

Product information

Purification method:	Antigen affinity purification
Storage:	PBS with 0.1% sodium azide and 50% glycerol pH 7.3. Store at -20°C.