

PSTPIP1 Polyclonal Antibody

Catalog number: 11951-1-AP

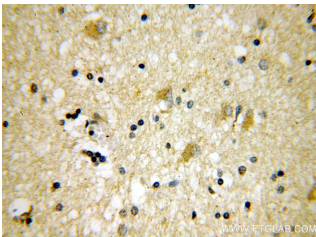
Size: 20 µg/150 µl

Source: Rabbit

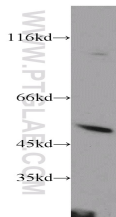
Isotype: IgG

Synonyms:

PSTPIP1; CD2 binding protein 1, CD2BP1, CD2BP1L, CD2BP1S, H PIP, PAPAS, PSTPIP, PSTPIP1



Immunohistochemical of paraffin-embedded human brain using 11951-1-AP (PSTPIP1 antibody) at dilution of 1:50 (under 40x lens)



mouse thymus tissue were subjected to SDS PAGE followed by western blot with 11951-1-AP (PSTPIP1 antibody) at dilution of 1:300

Background

PSTPIP1 (proline-serine-threonine phosphatase interacting protein 1), also known as CD2BP1, is a cytoskeleton-associated adaptor protein that links PEST-type phosphatases to their substrates (PMID: 19584923). It is involved in regulation of the actin cytoskeleton. Preferentially expressed in hematopoietic tissues, PSTPIP1 binds to the cytoplasmic tail of CD2, negatively affecting CD2-triggered T cell activation (PMID: 16670297). It has also been shown to interact with ABL1, PTPN18, WAS, CD2AP, PTPN12 and MEFV/pyrin. Mutations in the gene of PSTPIP1 cause PAPA syndrome (Pyogenic sterile Arthritis, Pyoderma gangrenosum, and Acne), an autoinflammatory disease (PMID:11971877; 14595024).

Applications

Tested applications:	ELISA, WB, IHC
Species specificity:	Human, Mouse, Rat; other species not tested.
Calculated PSTPIP1 MW:	416aa, 48 kDa
Observed PSTPIP1 MW:	45-48kd
Positive WB detected in	Mouse thymus tissue
Positive IHC detected in	Human brain tissue
Recommended dilution:	WB: 1:200-1:1000 IHC: 1:20-1:200

Application key: WB = Western blotting, IHC = Immunohistochemistry, IF = Immunofluorescence, IP = Immunoprecipitation

Immunogen information

Immunogen:	Ag2551
GenBank accession number:	BC008602
Gene ID (NCBI):	9051
Full name:	Proline-serine-threonine phosphatase interacting protein 1

Product information

Purification method:	Antigen affinity purification
Storage:	PBS with 0.02% sodium azide and 50% glycerol pH 7.3. Store at -20°C.