

FBXW2 Polyclonal Antibody

Catalog number: 11499-1-AP

Size: 30 µg/150 µl

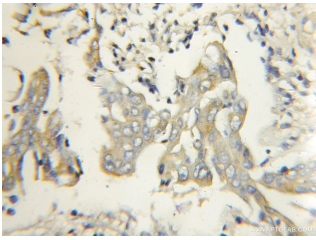
Source: Rabbit

Isotype: IgG

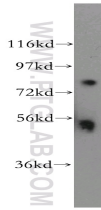
Synonyms:

FBXW2; FBW2, FBXW2, Fwd2,

Md6, Protein MD6



Immunohistochemical of paraffin-embedded human colon cancer using 11499-1-AP (FBXW2 antibody) at dilution of 1:50 (under 10x lens)



mouse testis tissue were subjected to SDS PAGE followed by western blot with 11499-1-AP (FBXW2 antibody) at dilution of 1:500

Background

The human FBW2 polypeptide contains an N-terminal F-box motif and a C-terminal domain of five WD repeats. A WD repeat is a motif typically consisting of 44-60 amino acids with a signature tryptophan and aspartic acid dipeptide at its C-terminus. The WD repeats in FBW2 recognize GCM1 in a way that is facilitated by GSK3β.

Applications

Tested applications:	ELISA, WB, IHC
Species specificity:	Human, Mouse, Rat; other species not tested.
Calculated FBXW2 MW:	452aa, 52 kDa
Observed FBXW2 MW:	52 kDa
Positive WB detected in:	Mouse testis tissue
Positive IHC detected in:	Human colon cancer tissue
Recommended dilution:	WB: 1:200-1:2000 IHC: 1:20-1:200

Application key: WB = Western blotting, IHC = Immunohistochemistry, IF = Immunofluorescence, IP = Immunoprecipitation

Immunogen information

Immunogen:	Ag2045
GenBank accession number:	BC018738
Gene ID (NCBI):	26190
Full name:	F-box and WD repeat domain containing 2

Product information

Purification method:	Antigen affinity purification
Storage:	PBS with 0.1% sodium azide and 50% glycerol pH 7.3. Store at -20°C.