

TPP1 Polyclonal Antibody

Catalog number: 12479-1-AP

Size: 20 µg/150 µl

Source: Rabbit

Isotype: IgG

Synonyms:

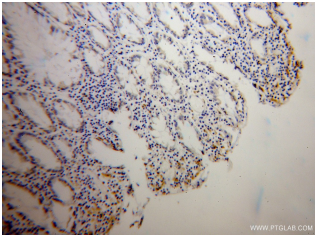
TPP1; CLN2, GIG1, LPIC, TPP 1,

TPP I, TPP1, Tripeptidyl

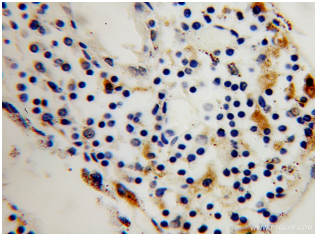
aminopeptidase, Tripeptidyl

peptidase 1, tripeptidyl

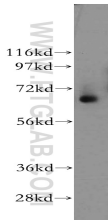
peptidase I, UNQ267/PRO304



Immunohistochemical of paraffin-embedded human colon cancer using 12479-1-AP(TPP1 antibody) at dilution of 1:50 (under 10x lens)



Immunohistochemical of paraffin-embedded human colon cancer using 12479-1-AP(TPP1 antibody) at dilution of 1:50 (under 40x lens)



human colon tissue were subjected to SDS PAGE followed by western blot with 12479-1-AP(TPP1 antibody) at dilution of 1:300

Background

TRIPEPTIDYL PEPTIDASE I, TPP1, is a lysosomal exopeptidase that sequentially removes tripeptides from the N termini of proteins. The proenzyme has an apparent molecular mass of 66 kD, and the mature enzyme has an apparent molecular mass of 46 to 48 kD. Defects in TPP1 are the cause of neuronal ceroid lipofuscinosis type 2 (CLN2). This protein distributes widely in all tissues.

Applications

| | |
|--------------------------|--|
| Tested applications: | ELISA, WB, IHC |
| Species specificity: | Human, Mouse, Rat; other species not tested. |
| Calculated TPP1 MW: | 563aa, 61kd |
| Observed TPP1 MW: | 66kd |
| Positive WB detected in | Human colon tissue |
| Positive IHC detected in | Human colon cancer tissue |
| Recommended dilution: | WB: 1:200-1:2000 IHC: 1:20-1:200 |

Application key: WB = Western blotting, IHC = Immunohistochemistry, IF = Immunofluorescence, IP = Immunoprecipitation

Immunogen information

| | |
|---------------------------|-------------------------|
| Immunogen: | Ag3173 |
| GenBank accession number: | BC014863 |
| Gene ID (NCBI): | 1200 |
| Full name: | Tripeptidyl peptidase I |

Product information

| | |
|----------------------|--|
| Purification method: | Antigen affinity purification |
| Storage: | PBS with 0.02% sodium azide and 50% glycerol pH 7.3. Store at -20°C. |