

PWP2 Polyclonal Antibody

Catalog number: 11390-1-AP

Size: 45 µg/150 µl

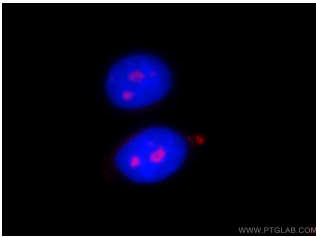
Source: Rabbit

Isotype: IgG

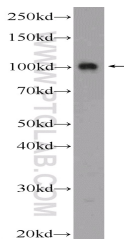
Synonyms:

PWP2; EHOc 17, PWP2,

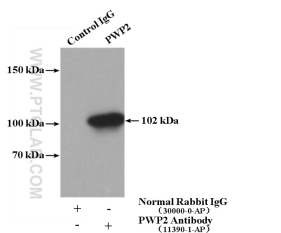
PWP2H



Immunofluorescent analysis of HepG2 cells, using PWP2 antibody 11390-1-AP at 1:25 dilution and Rhodamine-labeled goat anti-rabbit IgG (red). Blue pseudocolor = DAPI (fluorescent DNA dye).



HeLa cells were subjected to SDS PAGE followed by western blot with 11390-1-AP (PWP2 Antibody) at dilution of 1:600



IP Result of anti-PWP2 (IP:11390-1-AP, 4µg; Detection:11390-1-AP 1:600) with HeLa cells lysate 2400µg.

Background

The function of PWP2 remains largely unknown. Catalog#11390-1-AP is a rabbit polyclonal antibody raised against the full-length of human PWP2. The MW of this protein is 102 kDa, and this antibody specially recognises the 102 kDa protein.

Applications

Tested applications:	ELISA, IF, WB, IP
Species specificity:	Human; other species not tested.
Calculated PWP2 MW:	919aa,102 kDa
Observed PWP2 MW:	102 kDa
Positive WB detected in	HeLa cells
Positive IP detected in	HeLa cells
Positive IF detected in	HepG2 cells
Recommended dilution:	WB: 1:200-1:2000
	IP: 1:200-1:2000
	IF: 1:10-1:100

Application key: WB = Western blotting, IHC = Immunohistochemistry, IF = Immunofluorescence, IP = Immunoprecipitation

Immunogen information

Immunogen:	Ag1936
GenBank accession number:	BC014988
Gene ID (NCBI):	5822
Full name:	PWP2 periodic tryptophan protein homolog (yeast)

Product information

Purification method:	Antigen affinity purification
Storage:	PBS with 0.1% sodium azide and 50% glycerol pH 7.3. Store at -20°C.