

FBX15 Polyclonal Antibody

Catalog number: 13024-1-AP

Size: 31 µg/150 µl

Source: Rabbit

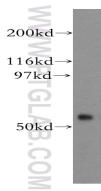
Isotype: IgG

Synonyms:

FBXO15; F box only protein 15,

F box protein 15, FBX15,

FBXO15



A2780 cells were subjected to SDS PAGE followed by western blot with 13024-1-AP (FBXO15 antibody) at dilution of 1:0

Background

F-box proteins have been shown to be critical for the ubiquitin-mediated degradation of cellular regulatory proteins, and they are a family of eukaryotic proteins characterized by an approximately 40 amino acid motif. SCF complex, a class of ubiquitin ligases, consists of invariable components, Skp1 and Cullin, and variable components of F-box proteins, which have a primary role in determining substrate specificity. The F-box proteins are divided into 3 classes: FBWs containing WD-40 domains, FBLs containing leucine-rich repeats, and FBXs containing either different protein-protein interaction modules or no recognizable motifs. FBXO15 (or FBX15) belongs to the FBXs class, and 2 isoforms produced by alternative splicing has been described. This antibody is expected detect both isoforms.

Applications

Tested applications:	ELISA, WB
Species specificity:	Human, Mouse; other species not tested.
Calculated FBX15 MW:	434aa,49kd
Observed FBX15 MW:	55kd
Positive WB detected in	A2780 cells, mouse ovary tissue
Recommended dilution:	WB: 1:750 - 1:3000

Application key: WB = Western blotting, IHC = Immunohistochemistry, IF = Immunofluorescence, IP = Immunoprecipitation

Immunogen information

Immunogen:	Ag3564
GenBank accession number:	BC029579
Gene ID (NCBI):	201456
Full name:	F-box protein 15

Product information

Purification method:	Antigen affinity purification
Storage:	PBS with 0.02% sodium azide and 50% glycerol pH 7.3. Store at -20°C.