

## TAF1B Polyclonal Antibody

Catalog number: 12818-1-AP

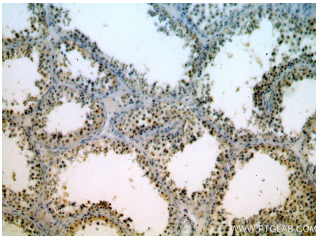
Size: 40 µg/150 µl

Source: Rabbit

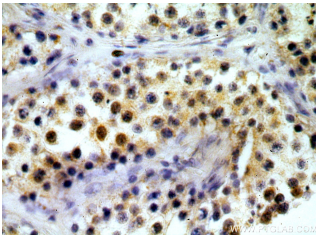
Isotype: IgG

Synonyms:

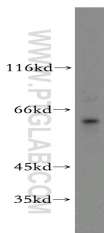
TAF1B; RAF1B, RAFI63, SL1,  
TAF1B, TAFI63, TBP associated  
factor 1B



Immunohistochemical of paraffin-embedded human testis using 12818-1-AP(TAF1B antibody) at dilution of 1:200 (under 10x lens)



Immunohistochemical of paraffin-embedded human testis using 12818-1-AP(TAF1B antibody) at dilution of 1:200 (under 40x lens)



HeLa cells were subjected to SDS PAGE followed by western blot with 12818-1-AP(TAF1B antibody) at dilution of 1:400

### Applications

Tested applications:	ELISA, WB, IHC
Species specificity:	Human; other species not tested.
Calculated TAF1B MW:	588aa,69 kDa
Observed TAF1B MW:	61kd
Positive WB detected in:	HeLa cells
Positive IHC detected in:	Human testis tissue
Recommended dilution:	WB: 1:200-1:2000 IHC: 1:20-1:200

Application key: WB = Western blotting, IHC = Immunohistochemistry, IF = Immunofluorescence, IP = Immunoprecipitation

### Immunogen information

Immunogen:	Ag3267
GenBank accession number:	BC018137
Gene ID (NCBI):	9014
Full name:	TATA box binding protein (TBP)-associated factor, RNA polymerase I, B, 63kDa

### Product information

Purification method:	Antigen affinity purification
Storage:	PBS with 0.02% sodium azide and 50% glycerol pH 7.3. Store at -20°C.