

**Description:** PP coverall(single collar,white)

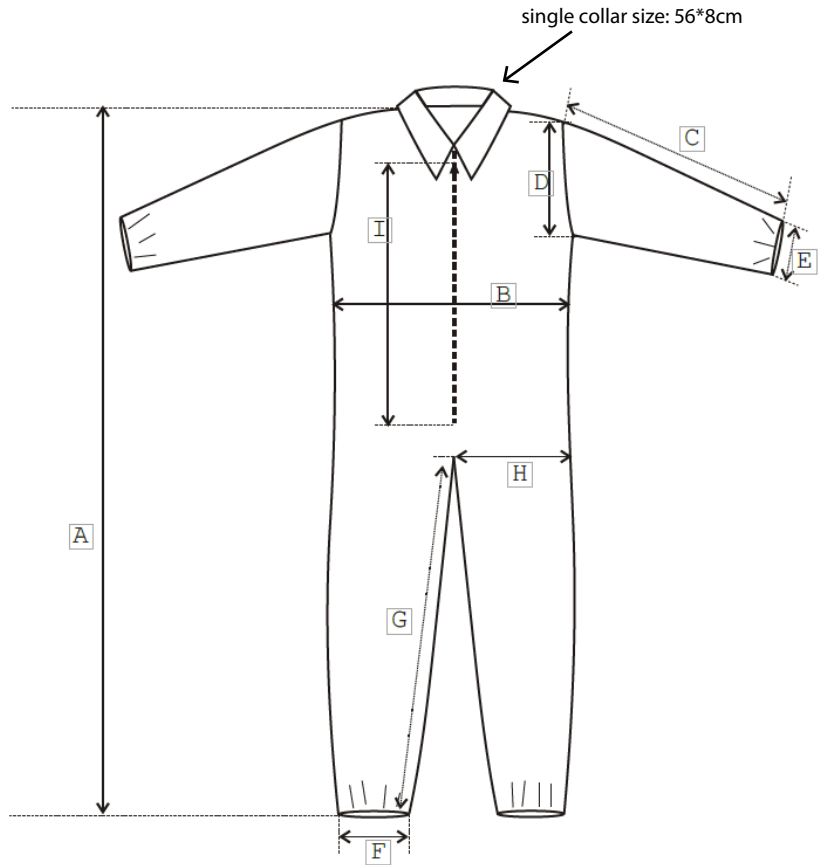
**Sizes:** M/L/XL/2XL/3XL/4XL/5XL

**Thomas No.:** 20A00J375 (XC7030-M),  
 20A00J376 (XC7030-L),  
 20A00J377 (XC7030-XL),  
 20A00J378 (XC7030-2XL),  
 20A00J379 (XC7030-3XL),  
 20A00J380 (XC7030-4XL),  
 20A00J381 (XC7030-5XL).

**Packaging:** 5/PK; 5 PKS/CS; 25/CS

**Color:** White

**Material:** PP 40g, antistatic  
 Latex-free elastic



Item	M	L	XL	2XL	3XL	4XL	5XL	Tolerance	Comment
A	167cm	171cm	178cm	183cm	189cm	192cm	195cm	+/-2cm	
B	61cm	64cm	69cm	75cm	80cm	83cm	86cm	+/-2cm	Chest width
C	56cm	58cm	58cm	58cm	58cm	60cm	60cm	+/-2cm	
D	27cm	28cm	30cm	30cm	32cm	34cm	34cm	+/-2cm	
E	8/17cm	8/17cm	8/17cm	8/17cm	8/17cm	8/17cm	8/17cm	+/-2cm	Relaxed/ stretched length
F	12/24cm	12/25cm	12/25cm	12/26cm	12/26cm	12/27cm	12/27cm	+/-2cm	Relaxed/ stretched length
G	73cm	74cm	76cm	80	83	84cm	85cm	+/-2cm	
H	33cm	35cm	37cm	40cm	43cm	44cm	44cm	+/-2cm	
I	70cm	70cm	70cm	70cm	75cm	75cm	75cm	+/-2cm	

## Material Inspection Report

Test item	Test Method	Specification	Unit	Test result			Remark	
				Average	Max	Min		
<b>Basis Weight</b>	GB/T4669-1995	40+/-2	g/m <sup>2</sup>	39.7	41.3	38.2		
<b>Tensile properties (N)</b>	MD	GB/T3923.1-1997	>58	N/5cm	72	80.3	67.1	
	CD	GB/T3923.1-1997	>30	N/5cm	48	55.5	41.6	
<b>Elongation rate (%)</b>	MD	GB/T3923.1-1997	>34	%	68.2	82.5	59.9	
	CD	GB/T3923.1-1997	>30	%	60.7	80.5	55.9	
<b>Surface Resistance</b>	EN1149-1		Ω	10 <sup>8</sup>	10 <sup>8</sup>	10 <sup>10</sup>		

