

CRTAC1 Polyclonal Antibody

Catalog number: 13001-1-AP

Size: 27 µg/150 µl

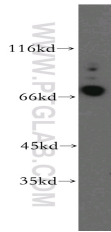
Source: Rabbit

Isotype: IgG

Synonyms:

CRTAC1; ASPIC1; CEP-68;

FLJ10320



human brain tissue were subjected to SDS PAGE followed by western blot with 13001-1-AP(CRTAC1 Antibody) at dilution of 1:600

Applications

Tested applications:	ELISA, WB
Species specificity:	Human, mouse, rat; other species not tested.
Positive WB detected in:	Human brain tissue
Calculated CRTAC1 MW:	661aa,71kd
Observed CRTAC1 MW:	68-72kd
Recommended dilution:	WB: 1:200-1:2000

Application key: WB = Western blotting, IHC = Immunohistochemistry, IF = Immunofluorescence, IP = Immunoprecipitation, FC = Flow cytometry

Immunogen information

Immunogen:	Ag3673
GenBank accession number:	BC034245
Gene ID (NCBI):	55118
Full name:	Cartilage acidic protein 1

Product information

Purification method:	Antigen affinity purification
Storage:	PBS with 0.02% sodium azide and 50% glycerol pH 7.3. Store at -20°C.