

## MAGEA1 Polyclonal Antibody

Catalog number: 12233-1-AP

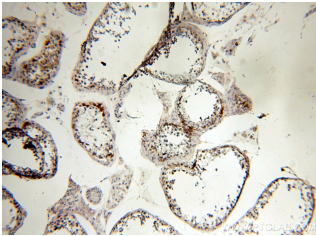
Size: 33 µg/150 µl

Source: Rabbit

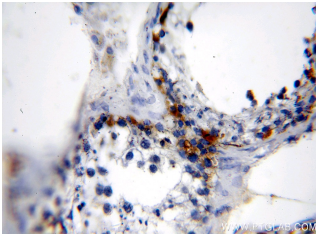
Isotype: IgG

Synonyms:

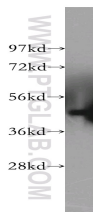
MAGEA1; Antigen MZ2 E,  
Cancer/testis antigen 1.1, CT1.1,  
MAGE 1 antigen, MAGE1,  
MAGE1A, MAGEA1, Melanoma  
associated antigen 1



Immunohistochemical of paraffin-embedded human testis using 12233-1-AP(MAGEA1 antibody) at dilution of 1:100 (under 10x lens)



Immunohistochemical of paraffin-embedded human testis using 12233-1-AP(MAGEA1 antibody) at dilution of 1:100 (under 40x lens)



A375 cells were subjected to SDS PAGE followed by western blot with 12233-1-AP(MAGEA1 antibody) at dilution of 1:500

### Applications

Tested applications:	ELISA, WB, IHC
Species specificity:	Human; other species not tested.
Calculated MAGEA1 MW:	309aa,34kd
Observed MAGEA1 MW:	43kd
Positive WB detected in	A375 cells
Positive IHC detected in	Human testis tissue
Recommended dilution:	WB: 1:500 - 1:2000 IHC: 1:50 - 1:200

Application key: WB = Western blotting, IHC = Immunohistochemistry, IF = Immunofluorescence, IP = Immunoprecipitation

### Immunogen information

Immunogen:	Ag2871
GenBank accession number:	BC017555
Gene ID (NCBI):	4100
Full name:	Melanoma antigen family A, 1 (directs expression of antigen MZ2-E)

### Product information

Purification method:	Antigen affinity purification
Storage:	PBS with 0.1% sodium azide and 50% glycerol pH 7.3. Store at -20°C.