

SMARCD2 Polyclonal Antibody

Catalog number: 11156-1-AP

Size: 22 µg/150 µl

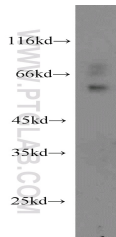
Source: Rabbit

Isotype: IgG

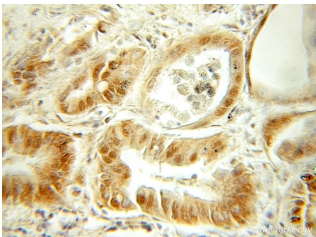
Synonyms:

SMARCD2; BAF60B; CRACD2;

PRO2451; Rsc6p



RAW 264.7 cells were subjected to SDS PAGE followed by western blot with 11156-1-AP(SMARCD2 Antibody) at dilution of 1:500



Immunohistochemistry of paraffin-embedded human cervical cancer using 11156-1-AP(SMARCD2 Antibody) at Dilution 1:50 (under 10x lens)

Background

The SWI/SNF chromatin remodelling complexes are important regulators of transcription; they consist of large multisubunit assemblies containing either Brm or Brg1 as the catalytic ATPase subunit and a variable subset of approximately 10 Brg/Brm-associated factors (BAF) [PMID:20148946]. SMARCD2 is one of BAF60 proteins, which are found in most complexes, is thought to bridge interactions between transcription factors and SWI/SNF complexes. [PMID:9427560]

Applications

Tested applications:	ELISA, WB, IHC
Species specificity:	Human, mouse, rat; other species not tested.
Positive WB detected in:	RAW 264.7 cells, mouse thymus tissue
Calculated SMARCD2 MW:	52kd
Observed SMARCD2 MW:	52kd
Positive IHC detected in:	Human cervical cancer
Recommended dilution:	WB: 1:200-1:2000 IHC: 1:20-1:200

Application key: WB = Western blotting, IHC = Immunohistochemistry, IF = Immunofluorescence, IP = Immunoprecipitation, FC = Flow cytometry

Immunogen information

Immunogen:	Ag1630
GenBank accession number:	BC018953
Gene ID (NCBI):	6603
Full name:	SWI/SNF related, matrix associated, actin dependent regulator of chromatin, subfamily d, member 2

Product information

Purification method:	Antigen affinity purification
Storage:	PBS with 0.1% sodium azide and 50% glycerol pH 7.3. Store at -20°C.