

YPEL5 Polyclonal Antibody

Catalog number: 11730-1-AP

Size: 20 µg/150 µl

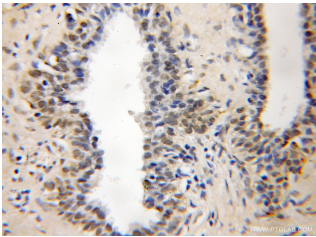
Source: Rabbit

Isotype: IgG

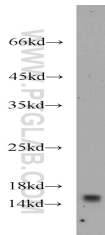
Synonyms:

YPEL5; CGI 127, Protein yippee like 5, yippee like 5

(Drosophila), YPEL5



Immunohistochemical of paraffin-embedded human prostate cancer using 11730-1-AP (YPEL5 antibody) at dilution of 1:25 (under 10x lens)



mouse brain tissue were subjected to SDS PAGE followed by western blot with 11730-1-AP (YPEL5 antibody) at dilution of 1:500

Background

YPEL5 (Protein yippee-like 5) belongs to the yippee family and is involved in a certain cell division-related function. During cell cycle, YPEL5 protein is detected at different subcellular localizations; at interphase, it is located in the nucleus and centrosome, then it changes location sequentially to spindle poles, mitotic spindle, and spindle midzone during mitosis, and finally transfers to midbody at cytokinesis (PMID:20580816).

Applications

Tested applications:	ELISA, WB, IHC
Cited applications:	IF, WB
Species specificity:	Human, Mouse, Rat; other species not tested.
Cited species:	Zebra finch
Calculated YPEL5 MW:	121aa, 14kd
Observed YPEL5 MW:	14kd
Positive WB detected in	Mouse brain tissue, mouse testis tissue
Positive IHC detected in	Human prostate cancer tissue
Recommended dilution:	WB: 1:200-1:2000 IHC: 1:10-1:100

Application key: WB = Western blotting, IHC = Immunohistochemistry, IF = Immunofluorescence, IP = Immunoprecipitation

Immunogen information

Immunogen:	Ag2328
GenBank accession number:	BC000836
Gene ID (NCBI):	51646
Full name:	Yippee-like 5 (Drosophila)

Product information

Purification method:	Antigen affinity purification
Storage:	PBS with 0.1% sodium azide and 50% glycerol pH 7.3. Store at -20°C.