

RGR Polyclonal Antibody

Catalog number: 11904-1-AP

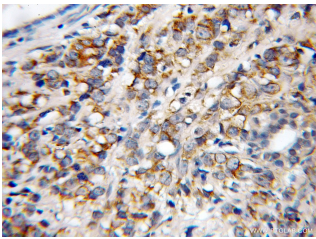
Size: 20 µg/150 µl

Source: Rabbit

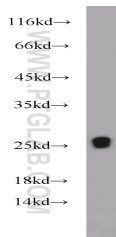
Isotype: IgG

Synonyms:

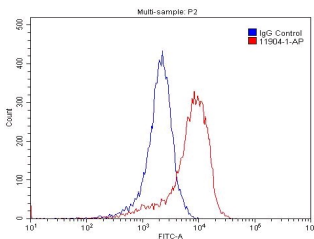
RGR; RGR



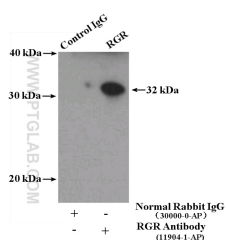
Immunohistochemical of paraffin-embedded human prostate cancer using 11904-1-AP (RGR antibody) at dilution of 1:100 (under 10x lens)



human heart tissue were subjected to SDS PAGE followed by western blot with 11904-1-AP (RGR antibody) at dilution of 1:500



1X10⁶ PC-3 cells were stained with 0.2ug RGR antibody (11904-1-AP, red) and control antibody (blue). Fixed with 4% PFA blocked with 3% BSA (30 min). Alexa Fluor 488-conjugated AffiniPure Goat Anti-Rabbit IgG(H+L) with dilution 1:1500.



IP Result of anti-RGR
(IP:11904-1-AP, 4ug;

Applications

Tested applications:	ELISA, IHC, WB, FC, IP
Species specificity:	Human, Mouse, Rat; other species not tested.
Calculated RGR MW:	32 kDa
Observed RGR MW:	32 kDa, 26 kDa
Positive WB detected in:	Human heart tissue
Positive IP detected in:	PC-3 cells
Positive IHC detected in:	Human prostate cancer tissue
Positive FC detected in:	PC-3 cells
Recommended dilution:	WB: 1:200-1:2000
	IP: 1:200-1:1000
	IHC: 1:20-1:200
	FC: N/A

Application key: WB = Western blotting, IHC = Immunohistochemistry, IF = Immunofluorescence, IP = Immunoprecipitation

Immunogen information

Immunogen:	Ag2552
GenBank accession number:	BC008094
Gene ID (NCBI):	5995
Full name:	Retinal G protein coupled receptor

Product information

Purification method:	Antigen affinity purification
Storage:	PBS with 0.1% sodium azide and 50% glycerol pH 7.3. Store at -20°C.

Detection:11904-1-AP 1:300)
with P C-3 cells lysate 4000ug.