

FBXW11 Polyclonal Antibody

Catalog number: 13149-1-AP

Size: 24 µg/150 µl

Source: Rabbit

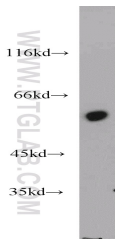
Isotype: IgG

Synonyms:

FBXW11; BTRC2, BTRCP2,

Fbw11, FBW1B, FBXW11,

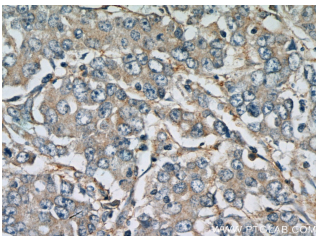
FBXW1B, Homologous to Slimb protein, Hos, KIAA0696



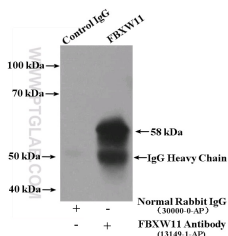
SGC-7901 cells were subjected to SDS PAGE followed by western blot with 13149-1-AP(FBXW11 antibody) at dilution of 1:2000



Immunohistochemistry of paraffin-embedded human stomach cancer tissue slide using 13149-1-AP(FBXW11 Antibody) at dilution of 1:100 (under 10x lens).



Immunohistochemistry of paraffin-embedded human stomach cancer tissue slide using 13149-1-AP(FBXW11 Antibody) at dilution of 1:100 (under 40x lens).



Background

FBXW11(F-box/WD repeat-containing protein 11) is also named as BTRCP2, FBW1B, FBXW1B, KIAA0696,HOS.It mediates the ubiquitination of phosphorylated NFKBIA, which degradation frees the associated NFKB1 to translocate into the nucleus and to activate transcription.It has 3 isoforms produced by alternative splicing.

Applications

Tested applications:	ELISA, WB, IHC, IP
Cited applications:	WB
Species specificity:	Human,Mouse,Rat; other species not tested.
Cited species:	Human
Calculated FBXW11 MW:	542aa,61 kDa
Observed FBXW11 MW:	61 kDa
Positive WB detected in	SGC-7901 cells, human stomach tissue, mouse stomach tissue
Positive IP detected in	Mouse stomach tissue
Positive IHC detected in	Human stomach cancer tissue
Recommended dilution:	WB: 1:1000-1:10000 IP: 1:200-1:2000 IHC: 1:50-1:500

Application key: WB = Western blotting, IHC = Immunohistochemistry, IF = Immunofluorescence, IP = Immunoprecipitation

Immunogen information

Immunogen:	Ag3761
GenBank accession number:	BC026213
Gene ID (NCBI):	23291
Full name:	F-box and WD repeat domain containing 11

Product information

Purification method:	Antigen affinity purification
Storage:	PBS with 0.1% sodium azide and 50% glycerol pH 7.3. Store at -20°C.

**IP Result of anti-FBXW11
(IP:13149-1-AP, 4ug;
Detection:13149-1-AP 1:600)
with mouse stomach tissue
lysate 4000ug.**