



**Thomas
Scientific**

CryoCommand™

For over 25 years Crystal Technology & Industries has been driven to deliver exceptional value to the scientific marketplace. Our engineers collaborate with top-tier research institutions to design & develop innovative Benchtop Equipment and Cryo Storage Solutions for today's Scientist.

An ideal solution for replacing ice baths. Avoids the mess and hassle of consumables while providing superior temperature stability and uniformity.



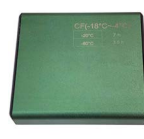
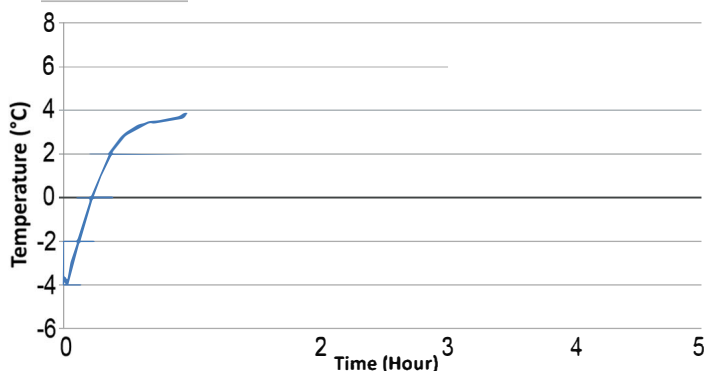
Internal Dimensions:
305 x 224mm (8 3/4" X 12")

Product Features:

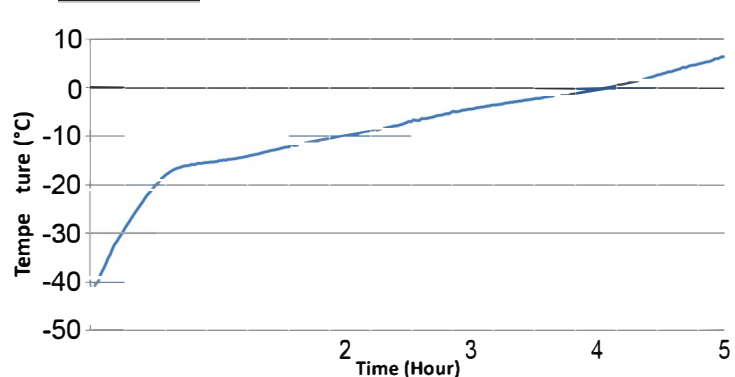
- Provides low temperature protection for biological samples
- Choice of Cryo-Cores for different storage temperatures
- Highly durable and suitable for frequent and repeated use
- Ice and Consumable free solution for easier workflow
- Applicable to a variety of different Tube Modules
- Holds multiple boxes of samples or vaccines
- Easy to clean and disinfect



CryoCommand PL6
Sample Temperatures: **CL Cryo-Core**



CryoCommand PF6
Sample Temperatures: **CF Cryo-Core**



A variety of Tube Modules are available.
6 Tube Modules sit on top of the 6 Cryo-Core Modules

(Tube modules are not included. They must be ordered separately.)



CM01
30 x 2ml



CM02
48 x 1.5ml



CM03
30 x 5ml



CM04
96 x PCR





CryoCommand™

For over 25 years Crystal Technology & Industries has been driven to deliver exceptional value to the scientific marketplace. Our engineers collaborate with top-tier research institutions to design & develop innovative Benchtop Equipment and Cryo Storage Solutions for today's Scientist.


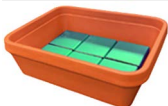
Cryo-Cores:

Cryo-Core	Product Name	Temp. Range	Freezer Temperature	Freeze Time	Dimensions
CL	Cooling Core	0.5°C ~ 4°C	-20°C	4h+	105 x 100 x 26 mm
		0.5°C ~ 4°C	-80°C	2h+	105 x 100 x 26 mm
CF	Freeze Core	-18°C ~ -4°C	-20°C	6h+	105 x 100 x 26 mm
		-18°C ~ -4°C	-80°C	3h+	105 x 100 x 26 mm

Tube Modules:

Tube Module	Part Number	Specifications	Dimensions
2 ml Tubes	CM01	30 x 2 ml Cryo Tube	119 x 101 x 38 mm
1.5 ml Tubes	CM02	48 x 1.5 ml Cryo Tube	119 x 101 x 38 mm
5 ml Tubes	CM03	30 x 5 ml Cryo Tube	119 x 101 x 38 mm
PCR Tubes	CM04	96 x PCR Module	119 x 101 x 38 mm

Ordering Information:

	CryoCommand™	Thomas No.	Manufacturer No.
	CryoCommand PL6 (Comes with (6) CL Cryo-Cores)	21A00B259	PL6
	CryoCommand PF6 (Comes with (6) CF Cryo-Cores)	21A00B260	PF6

Tube Modules are sold separately. Tube Modules may be ordered as an accessory. Any combination of (6) Tube Modules will fit directly on top of the (6) included Cryo-Cores.