



IBT BIOSERVICES

4 Research Court, Suite 300

Rockville, MD 20850

877-411-2041

Services@ibtbioservices.com

Rabbit anti-SUDV VP40 pAb

Catalog #: 0302-001

Lot #: 1401006

Immunogen: Peptide sequence specific to Sudan Ebola virus (SUDV) VP40 matrix protein.

Description: Affinity purified rabbit polyclonal antibody reactive to SUDV VP40. The antibody detects VP40 in virus-like particles (VLP) and recombinant SUDV VP40 (SEBOV rVP40).

Supplied: 100 µg is supplied in PBS at a concentration of 0.59 mg/mL. 0.02% Sodium azide has been added.

Raised in: Rabbits

Purification: Antibody is affinity purified using immobilized immunogen.

Clonality: Polyclonal

Relevance: The antibody can be used for detection of SUDV VP40 matrix protein.

Recommended Dilutions:

ELISA: Assay-dependent dilution

WB: Assay-dependent dilution. Internal QC demonstrates strong detection of SUDV VP40 at a use dilution of 100 ng/mL of the antibody.

Storage: 2-3 weeks +4°C, -20°C long term

Cross Reactivity:

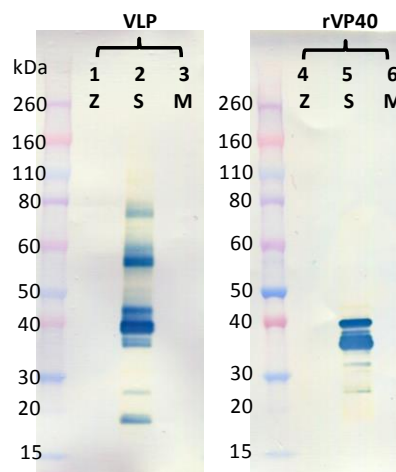
In Western Blotting: No cross-reactivity was observed to recombinant Zaire Ebola virus (EBOV) VLP or Musoke Marburg (MMARV) VLP, nor to EBOV and MMARV VP40.

In ELISA: Cross-reactivity against EBOV VLP and increased background against MMARV VLP were observed at the highest concentrations of antibody tested.

Related Products:

IBT provides a wide array of anti-filovirus specific antibodies, recombinant proteins and other infectious disease reagents. Please see our website, www.ibtbioservices.com for more details.

Western Blot Data:



Western blots were detected under reduced conditions with anti-SUDV VP40 Pab at 100 ng/mL and visualized using an anti-rabbit IgG-HRP conjugate and TMB membrane substrate. VP40 is visualized in baculovirus-expressed SUDV VLP (lane 2) but not in the EBOV or MMARV VLPs (lanes 1, 3). SUDV rVP40 is also visualized (lane 5). No cross-reactivity with EBOV or MMARV rVP40 is observed (lanes 4, 6).

ELISA Data:

| Antibody (µg/mL) | OD 650 nm | | |
|---------------------|------------------------|------------------------|-------------------------|
| | EBOV VLP @ 10 µg/mL | SUDV VLP @ 10 µg/mL | MMARV VLP @ 10 µg/mL |
| 20.0000 | 0.4250 | 3.5150 | 0.2470 |
| 6.3246 | 0.1660 | 3.6790 | 0.1060 |
| 2.0000 | 0.0980 | 3.7810 | 0.0800 |
| 0.6325 | 0.0730 | 3.6620 | 0.0740 |
| 0.2000 | 0.0650 | 3.7080 | 0.0670 |
| 0.0632 | 0.0590 | 3.3920 | 0.0640 |
| 0.0200 | 0.0660 | 2.2800 | 0.0780 |
| 0.0063 | 0.0680 | 1.0760 | 0.0620 |
| 0.0020 | 0.0670 | 0.4210 | 0.0800 |
| 0.0006 | 0.0730 | 0.2010 | 0.1000 |
| 0.0002 | 0.0680 | 0.1090 | 0.0900 |
| 0.0000 | 0.0810 | 0.0720 | 0.0630 |

VLPs were solubilized in a final concentration of 1% Triton X-100 and diluted to 10 µg/mL in PBS (0.01% Triton) for plate coating. Anti-SUDV VP40 antibody was serially diluted semi-log from 20 µg/mL and incubated on the coated plates. Washed plates were detected with anti-rabbit IgG-HRP conjugate and TMB substrate. OD₆₅₀ is reported above.

Intended for research use only, not for human, therapeutic, or diagnostic applications.

The buyer cannot sell or otherwise transfer this product for Commercial Purposes

without written approval of Integrated BioTherapeutics, Inc.

Copyright 2014. Integrated BioTherapeutics, Inc. All rig