

PSMA2 Polyclonal Antibody

Catalog number: 14377-1-AP

Size: 39 µg/150 µl

Source: Rabbit

Isotype: IgG

Synonyms:

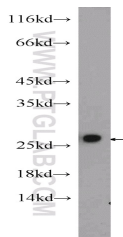
PSMA2; 20S proteasome, HC3,

Macropain subunit C3, MU,

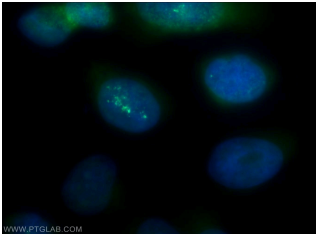
PMSA2, Proteasome

component C3, PSC2, PSC3,

PSMA2



NIH/3T3 cells were subjected to SDS PAGE followed by western blot with 14377-1-AP (PSMA2 Antibody) at dilution of 1:600



Immunofluorescent analysis of HepG2 cells using 14377-1-AP (PSMA2 Antibody) at dilution of 1:50 and Alexa Fluor 488-conjugated AffiniPure Goat Anti-Rabbit IgG(H+L)

Applications

Tested applications:	ELISA, WB, IF
Species specificity:	Human, Mouse, Rat; other species not tested.
Calculated PSMA2 MW:	26 kDa
Observed PSMA2 MW:	26 kDa
Positive WB detected in	NIH/3T3 cells, HEK-293 cells, HepG2 cells, mouse kidney tissue, PC-3 cells
Positive IF detected in	HepG2 cells
Recommended dilution:	WB: 1:200-1:2000 IF: 1:20-1:200

Application key: WB = Western blotting, IHC = Immunohistochemistry, IF = Immunofluorescence, IP = Immunoprecipitation

Immunogen information

Immunogen:	Ag5753
GenBank accession number:	BC047697
Gene ID (NCBI):	5683
Full name:	Proteasome (prosome, macropain) subunit, alpha type, 2

Product information

Purification method:	Antigen affinity purification
Storage:	PBS with 0.1% sodium azide and 50% glycerol pH 7.3. Store at -20°C.