

## CHSY1 Polyclonal Antibody

Catalog number: 14420-1-AP

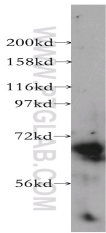
Size: 59 µg/150 µl

Source: Rabbit

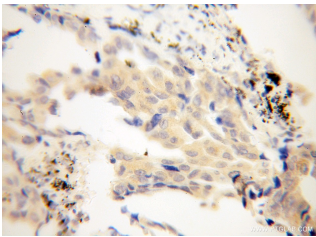
Isotype: IgG

Synonyms:

CHSY1; CSS1; KIAA0990



mouse spleen tissue were subjected to SDS PAGE followed by western blot with 14420-1-AP(CHSY1 Antibody) at dilution of 1:1500



Immunohistochemistry of paraffin-embedded human lung cancer using 14420-1-AP(CHSY1 Antibody) at Dilution 1:100 (under 40x lens)

### Applications

Tested applications:	ELISA, WB, IHC
Cited applications:	WB
Species specificity:	Human, mouse, rat, zebrafish; other species not tested.
Cited species:	Human
Positive WB detected in:	Mouse spleen tissue, mouse heart tissue
Calculated CHSY1 MW:	92kd
Observed CHSY1 MW:	66kd
Positive IHC detected in:	Human lung cancer
Recommended dilution:	WB: 1:500-1:5000 IHC: 1:50-1:200

Application key: WB = Western blotting, IHC = Immunohistochemistry, IF = Immunofluorescence, IP = Immunoprecipitation, FC = Flow cytometry

### Immunogen information

Immunogen:	Ag5766
GenBank accession number:	BC046247
Gene ID (NCBI):	22856
Full name:	Chondroitin sulfatase 1

### Product information

Purification method:	Antigen affinity purification
Storage:	PBS with 0.02% sodium azide and 50% glycerol pH 7.3. Store at -20°C.