

LIPA Polyclonal Antibody

Catalog number: 12956-1-AP

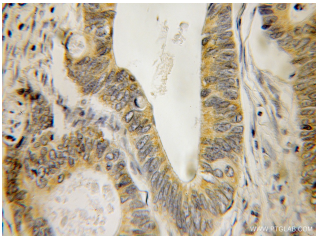
Size: 20 µg/150 µl

Source: Rabbit

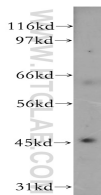
Isotype: IgG

Synonyms:

LIPA; CESD, Cholesteryl
esterase, LAL, LIPA, Lipase A,
Sterol esterase



Immunohistochemical of paraffin-embedded human colon cancer using 12956-1-AP(LIPA antibody) at dilution of 1:100 (under 10x lens)



Y79 cells were subjected to SDS PAGE followed by western blot with 12956-1-AP(LIPA antibody) at dilution of 1:400

Background

Human acid lipase/cholesteryl esterase (LIPA) is a 46-kDa glycoprotein required for the lysosomal hydrolysis of cholesteryl esters and triglycerides that cells acquire through the receptor-mediated endocytosis of low-density lipoproteins(PMID:8432549). Defects in LIPA are the cause of Wolman disease (WOD)(PMID:8146180) and cholesteryl ester storage disease (CESD)(PMID:9633819). It has 2 isoforms produced by alternative splicing with the molecular weight of 45 kDa and 39 kDa. The full length protein has a signal peptide and several glycosylation sites.

Applications

Tested applications:	ELISA, WB, IHC
Species specificity:	Human, Mouse, Rat; other species not tested.
Calculated LIPA MW:	399aa, 45kd
Observed LIPA MW:	45kd
Positive WB detected in	Y79 cells, HEK-293 cells, HeLa cells, HepG2 cells, HT-1080 cells
Positive IHC detected in	Human colon cancer tissue
Recommended dilution:	WB: 1:200-1:2000 IHC: 1:20-1:200

Application key: WB = Western blotting, IHC = Immunohistochemistry, IF = Immunofluorescence, IP = Immunoprecipitation

Immunogen information

Immunogen:	Ag3627
GenBank accession number:	BC012287
Gene ID (NCBI):	3988
Full name:	Lipase A, lysosomal acid, cholesterol esterase

Product information

Purification method:	Antigen affinity purification
Storage:	PBS with 0.1% sodium azide and 50% glycerol pH 7.3. Store at -20°C.