

CD276 Polyclonal Antibody

Catalog number: 14453-1-AP

Size: 28 µg/150 µl

Source: Rabbit

Isotype: IgG

Synonyms:

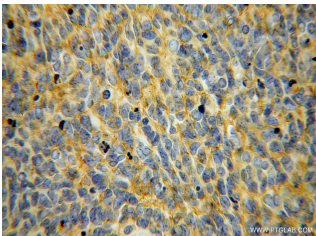
CD276; 4lg B7 H3, B7 H3, B7

homolog 3, B7H3, CD276,

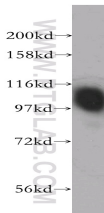
CD276 antigen, CD276

molecule, Costimulatory

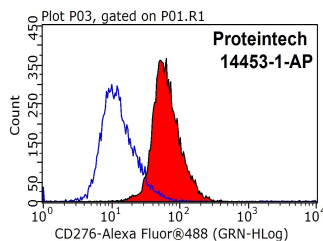
molecule, UNQ309/PRO352



Immunohistochemical of paraffin-embedded human medulloblastoma using 14453-1-AP (CD276 antibody) at dilution of 1:100 (under 40x lens)



PC-3 cells were subjected to SDS PAGE followed by western blot with 14453-1-AP (CD276 antibody) at dilution of 1:500



1X10⁶ RAW 264.7 cells were stained with 0.2µg CD276 antibody (14453-1-AP, red) and control antibody (blue). Fixed with 90% MeOH blocked with 3% BSA (30 min). Alexa Fluor 488-conjugated AffiniPure Goat Anti-Rabbit IgG(H+L) with dilution 1:1000.

Applications

Tested applications:

ELISA, WB, IHC, FC

Species specificity:

Human, Mouse, Rat; other species not tested.

Calculated CD276 MW:

57 kDa

Observed CD276 MW:

100kd

Positive WB detected in

PC-3 cells, HEK-293 cells

Positive IHC detected in

Human medulloblastoma tissue, human testis tissue

Positive FC detected in

RAW 264.7 cells

Recommended dilution:

WB: 1:500-1:5000

IHC: 1:20-1:200

FC: N/A

Application key: WB = Western blotting, IHC = Immunohistochemistry, IF = Immunofluorescence, IP = Immunoprecipitation

Immunogen information

Immunogen:

Ag6006

GenBank accession number:

BC062581

Gene ID (NCBI):

80381

Full name:

CD276 molecule

Product information

Purification method:

Antigen affinity purification

Storage:

PBS with 0.02% sodium azide and 50% glycerol pH 7.3. Store at -20°C.