

## BLVRA Polyclonal Antibody

Catalog number: 10775-1-AP

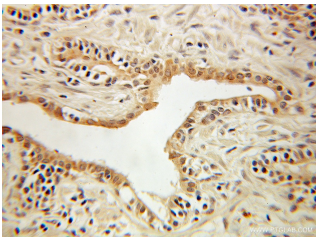
Size: 30 µg/150 µl

Source: Rabbit

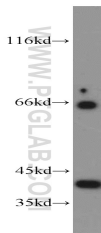
Isotype: IgG

Synonyms:

BLVRA; Biliverdin IX alpha reductase, biliverdin reductase A, BLVR, BLVRA, BVR, BVR A, BVRA



Immunohistochemical of paraffin-embedded human prostate cancer using 10775-1-AP (BLVRA antibody) at dilution of 1:100 (under 10x lens)



human brain tissue were subjected to SDS PAGE followed by western blot with 10775-1-AP (BLVRA antibody) at dilution of 1:300

### Background

BLVRA (Biliverdin reductase A) is also named as BLVR, BVR and belongs to the biliverdin reductase subfamily. It catalyzes the conversion of biliverdin to bilirubin in the presence of NADPH or NADH. This protein can exist as a dimer (PMID:11773068). Defects in BLVRA are the cause of hyperbiliverdinemia (HBLVD).

### Applications

Tested applications:	ELISA, WB, IHC
Species specificity:	Human, Mouse; other species not tested.
Calculated BLVRA MW:	33.2kd
Observed BLVRA MW:	37-40 kDa, 66 kDa
Positive WB detected in:	Human brain tissue, L02 cells, mouse liver tissue
Positive IHC detected in:	Human prostate cancer tissue, human pancreas tissue
Recommended dilution:	WB: 1:200-1:2000 IHC: 1:20-1:200

Application key: WB = Western blotting, IHC = Immunohistochemistry, IF = Immunofluorescence, IP = Immunoprecipitation

### Immunogen information

Immunogen:	Ag1166
GenBank accession number:	BC008456
Gene ID (NCBI):	644
Full name:	Biliverdin reductase A

### Product information

Purification method:	Antigen affinity purification
Storage:	PBS with 0.1% sodium azide and 50% glycerol pH 7.3. Store at -20°C.