

MIPEP Polyclonal Antibody

Catalog number: 11002-1-AP

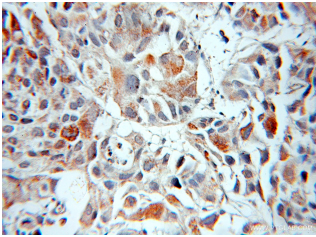
Size: 60 µg/150 µl

Source: Rabbit

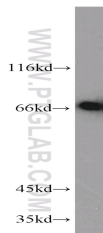
Isotype: IgG

Synonyms:

MIPEP; HMIP, MIP, MIPEP



Immunohistochemical of paraffin-embedded human prostate cancer using 11002-1-AP (MIPEP antibody) at dilution of 1:50 (under 10x lens)



HepG2 cells were subjected to SDS PAGE followed by western blot with 11002-1-AP (MIPEP antibody) at dilution of 1:1000

Background

MIPEP (Mitochondrial intermediate peptidase) is also named as MIP and belongs to the peptidase M3 family. It performs the final step in processing a specific class of nuclear-encoded proteins targeted to the mitochondrial matrix or inner membrane. The enzyme is a monomer of 75 kDa with a transit peptide and about 20% of the final MIP preparation consists of equimolar amounts of two peptides of 47 kDa and 28 kDa, which are apparently the products of a single cleavage of the 75 kDa protein. MIP is an independent endopeptidase acting on mitochondrial intermediate proteins as substrates. (PMID:1322290).

Applications

Tested applications:	ELISA, IHC, WB
Cited applications:	WB
Species specificity:	Human; other species not tested.
Cited species:	Human
Calculated MIPEP MW:	81 kDa
Observed MIPEP MW:	70-80 kDa
Positive WB detected in	HepG2 cells, MCF7 cells
Positive IHC detected in	Human prostate cancer tissue
Recommended dilution:	WB: 1:500-1:5000 IHC: 1:20-1:200

Application key: WB = Western blotting, IHC = Immunohistochemistry, IF = Immunofluorescence, IP = Immunoprecipitation

Immunogen information

Immunogen:	Ag1451
GenBank accession number:	BC009934
Gene ID (NCBI):	4285
Full name:	Mitochondrial intermediate peptidase

Product information

Purification method:	Antigen affinity purification
Storage:	PBS with 0.1% sodium azide and 50% glycerol pH 7.3. Store at -20°C.