

CTPS2 Polyclonal Antibody

Catalog number: 12852-1-AP

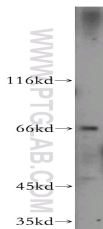
Size: 28 µg/150 µl

Source: Rabbit

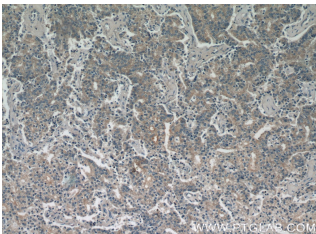
Isotype: IgG

Synonyms:

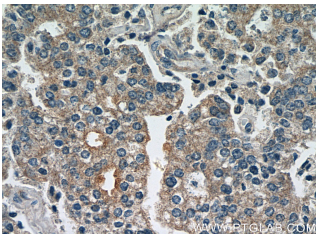
CTPS2; CTP synthase 2, CTP synthase II, CTP synthetase 2, CTPS2, DKFZp686C17207, FLJ43358, UTP ammonia ligase 2



mouse testis tissue were subjected to SDS PAGE followed by western blot with 12852-1-AP(CTPS2 antibody) at dilution of 1:500



Immunohistochemistry of paraffin-embedded human prostate cancer tissue slide using 12852-1-AP(CTPS2 Antibody) at dilution of 1:50 (under 10x lens)



Immunohistochemistry of paraffin-embedded human prostate cancer tissue slide using 12852-1-AP(CTPS2 Antibody) at dilution of 1:50 (under 40x lens)

Background

CTPS2 (CTP synthase 2) is also named as UTP--ammonia ligase 2 and belongs to the CTP synthase family. It catalyzes the ATP-dependent amination of UTP to CTP with either L-glutamine or ammonia as the source of nitrogen and constitutes the rate-limiting enzyme in the synthesis of cytosine nucleotides.

Applications

Tested applications:	ELISA, WB, IHC
Species specificity:	Human, Mouse, Rat; other species not tested.
Calculated CTPS2 MW:	586aa, 66 kDa
Observed CTPS2 MW:	66 kDa
Positive WB detected in	Mouse testis tissue, human adrenal gland tissue
Positive IHC detected in	Human prostate cancer tissue, human colon tissue
Recommended dilution:	WB: 1:200-1:2000 IHC: 1:20-1:200

Application key: WB = Western blotting, IHC = Immunohistochemistry, IF = Immunofluorescence, IP = Immunoprecipitation

Immunogen information

Immunogen:	Ag3490
GenBank accession number:	BC034986
Gene ID (NCBI):	56474
Full name:	CTP synthase II

Product information

Purification method:	Antigen affinity purification
Storage:	PBS with 0.02% sodium azide and 50% glycerol pH 7.3. Store at -20°C.