

MEF2D Polyclonal Antibody

Catalog number: 14353-1-AP

Size: 36 µg/150 µl

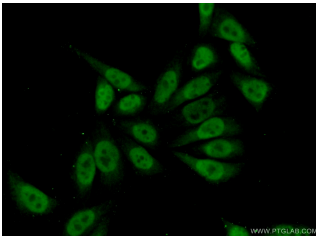
Source: Rabbit

Isotype: IgG

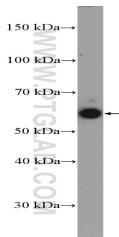
Synonyms:

MEF2D; DKFZp686I1536,

MEF2D, myocyte enhancer factor 2D



Immunofluorescent analysis of (10% Formaldehyde) fixed HeLa cells using 14353-1-AP (MEF2D Antibody) at dilution of 1:50 and Alexa Fluor 488-conjugated AffiniPure Goat Anti-Rabbit IgG(H+L)



C2C12 cell were subjected to SDS PAGE followed by western blot with 14353-1-AP (MEF2D Antibody) at dilution of 1:600

Applications

| | |
|-------------------------|--|
| Tested applications: | ELISA, WB, IF |
| Species specificity: | Human, Mouse, Rat; other species not tested. |
| Calculated MEF2D MW: | 56 kDa |
| Observed MEF2D MW: | 55-60 kDa |
| Positive WB detected in | C2C12 cell, HeLa cells |
| Positive IF detected in | HeLa cells |
| Recommended dilution: | WB: 1:200-1:2000 IF: 1:50-1:500 |

Application key: WB = Western blotting, IHC = Immunohistochemistry, IF = Immunofluorescence, IP = Immunoprecipitation

Immunogen information

| | |
|---------------------------|----------------------------|
| Immunogen: | Ag5700 |
| GenBank accession number: | BC040949 |
| Gene ID (NCBI): | 4209 |
| Full name: | Myocyte enhancer factor 2D |

Product information

| | |
|----------------------|---|
| Purification method: | Antigen affinity purification |
| Storage: | PBS with 0.1% sodium azide and 50% glycerol pH 7.3. Store at -20°C. |