

CHMP2B Polyclonal Antibody

Catalog number: 12527-1-AP

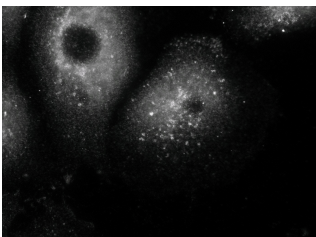
Size: 20 µg/150 µl

Source: Rabbit

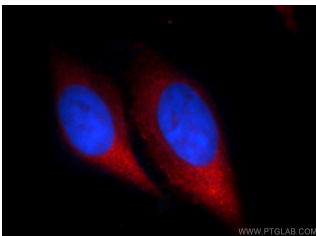
Isotype: IgG

Synonyms:

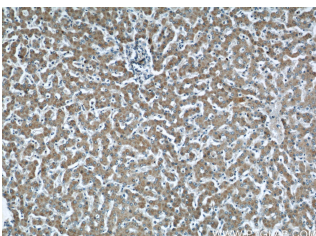
CHMP2B; CHMP2.5, CHMP2B, chromatin modifying protein 2B, DKFZp564O123, DMT1, hVps2 2, VPS2 2, VPS2B



IF result (endosomal stain) of anti-CHMP2B (12527-1-AP) with the cell (PFA fixed) which has been treated with siRNA for VPS4 by Dr. Philip Woodman.



Immunofluorescent analysis of HepG2 cells, using CHMP2B antibody 12527-1-AP at 1:25 dilution and Rhodamine-labeled goat anti-rabbit IgG (red). Blue pseudocolor = DAPI (fluorescent DNA dye).



Immunohistochemical of paraffin-embedded human liver using 12527-1-AP (CHMP2B antibody) at dilution of 1:50 (under 10x lens)

Background

CHMP2B, chromatin-modifying protein 2b, also named as CHMP2.5, VPS2B and VPS2 2, belongs to the chromatin-modifying protein / charged multivesicular body protein (CHMP) family. It is a component of endosomal sorting complex required for transport III (ESCRT-III), which involves in endosomal and autophagic trafficking of proteins to lysosomes for degradation. Mutations of CHMP2B lead to C-terminal truncation or been replaced with mis-splicing C-termini and cause frontotemporal lobar degeneration (FTLD). In CHMP2B mutation patients, p62- and ubiquitin-positive, but TDP-43 and FUS negative neural inclusions are formed, maybe caused by impaired lysosomal degradation through the autophagy and endosome-lysosome pathways.

Applications

Tested applications:	ELISA, WB, IF, IHC
Cited applications:	WB
Species specificity:	Human, Mouse, Rat; other species not tested.
Cited species:	Human
Calculated CHMP2B MW:	24 kDa
Observed CHMP2B MW:	32 kDa
Positive WB detected in	SH-SY5Y cells, human brain tissue, human heart tissue, human ileum tissue, human kidney tissue, human placenta tissue, mouse brain tissue, NIH/3T3 cells
Positive IHC detected in	Human liver tissue, human brain tissue
Positive IF detected in	HepG2 cells, PFA fixed cells
Recommended dilution:	WB: 1:200-1:2000 IHC: 1:20-1:200 IF: 1:10-1:100

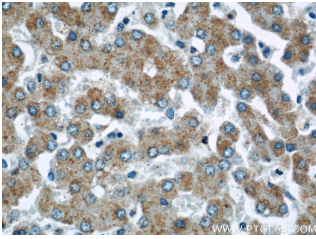
Application key: WB = Western blotting, IHC = Immunohistochemistry, IF = Immunofluorescence, IP = Immunoprecipitation

Immunogen information

Immunogen:	Ag3222
GenBank accession number:	BC001553
Gene ID (NCBI):	25978
Full name:	Chromatin modifying protein 2B

Product information

Purification method:	Antigen affinity purification
Storage:	PBS with 0.02% sodium azide and 50% glycerol pH 7.3. Store at -20°C.



Immunohistochemical of paraffin-embedded human liver using 12527-1-AP(CHMP2B antibody) at dilution of 1:50 (under 40x lens)



SH-SY5Y cells were subjected to SDS PAGE followed by western blot with 12527-1-AP(CHMP2B antibody) at dilution of 1:1000