

SH3GL2 Polyclonal Antibody

Catalog number: 12435-1-AP

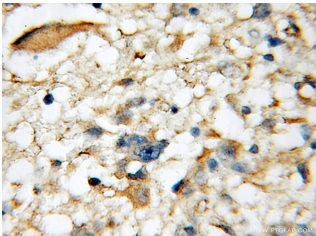
Size: 42 µg/150 µl

Source: Rabbit

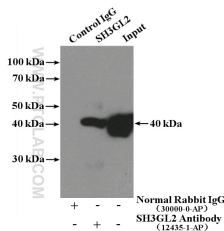
Isotype: IgG

Synonyms:

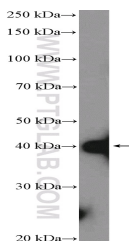
SH3GL2; CNSA2, EEN B1, Endophilin 1, Endophilin A1, FLJ20276, FLJ25015, SH3 domain GRB2 like 2, SH3 domain protein 2A, SH3D2A, SH3GL2, SH3P4



Immunohistochemical of paraffin-embedded human gliomas using 12435-1-AP(SH3GL2 antibody) at dilution of 1:50 (under 10x lens)



IP Result of anti-SH3GL2 (IP:12435-1-AP, 4µg; Detection:12435-1-AP 1:1000) with mouse brain tissue lysate 4000µg.



mouse brain tissue were subjected to SDS PAGE followed by western blot with 12435-1-AP(SH3GL2 Antibody) at dilution of 1:1000

Applications

Tested applications:	ELISA, IHC, IP, WB
Cited applications:	IHC, WB
Species specificity:	Human, Mouse, Rat; other species not tested.
Cited species:	Human
Calculated SH3GL2 MW:	39.8 kDa
Observed SH3GL2 MW:	40 kDa
Positive WB detected in	Mouse brain tissue, rat brain tissue
Positive IP detected in	Mouse brain tissue
Positive IHC detected in	Human gliomas tissue
Recommended dilution:	WB: 1:500-1:5000 IP: 1:500-1:5000 IHC: 1:20-1:200

Application key: WB = Western blotting, IHC = Immunohistochemistry, IF = Immunofluorescence, IP = Immunoprecipitation

Immunogen information

Immunogen:	Ag3114
GenBank accession number:	BC032825
Gene ID (NCBI):	6456
Full name:	SH3-domain GRB2-like 2

Product information

Purification method:	Antigen affinity purification
Storage:	PBS with 0.1% sodium azide and 50% glycerol pH 7.3. Store at -20°C.