

## TCOF1 Polyclonal Antibody

Catalog number: 11003-1-AP

Size: 45 µg/150 µl

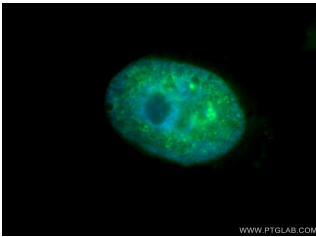
Source: Rabbit

Isotype: IgG

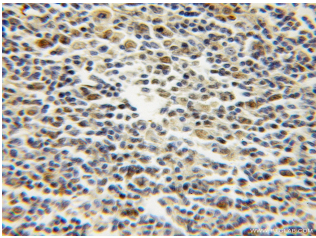
Synonyms:

TCOF1; MFD1, TCOF1, treacle,

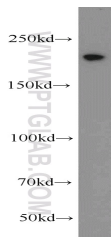
Treacle protein



Immunofluorescent analysis of MCF-7 cells, using TCOF1 antibody 11003-1-AP at 1:50 dilution and FITC-labeled donkey anti-rabbit IgG (green). Blue pseudocolor = DAPI (fluorescent DNA dye).



Immunohistochemical analysis of paraffin-embedded human lymphoma using 11003-1-AP (TCOF1 antibody) at dilution of 1:50 (under 10x lens)



HeLa cells were subjected to SDS PAGE followed by western blot with 11003-1-AP (TCOF1 antibody) at dilution of 1:1000

### Applications

Tested applications:	ELISA, WB, IHC, IF
Cited applications:	IF, WB
Species specificity:	Human; other species not tested.
Cited species:	Human
Calculated TCOF1 MW:	97 kDa; 144 kDa; 152 kDa
Observed TCOF1 MW:	220 kDa
Positive WB detected in:	HeLa cells, Jurkat cells
Positive IHC detected in:	Human lymphoma tissue
Positive IF detected in:	MCF-7 cells
Recommended dilution:	WB: 1:500-1:5000 IHC: 1:20-1:200 IF: 1:20-1:200

Application key: WB = Western blotting, IHC = Immunohistochemistry, IF = Immunofluorescence, IP = Immunoprecipitation

### Immunogen information

Immunogen:	Ag1447
GenBank accession number:	BC014559
Gene ID (NCBI):	6949
Full name:	Treacher Collins-Franceschetti syndrome 1

### Product information

Purification method:	Antigen affinity purification
Storage:	PBS with 0.1% sodium azide and 50% glycerol pH 7.3. Store at -20°C.