

OSTF1 Polyclonal Antibody

Catalog number: 10671-1-AP

Size: 20 µg/150 µl

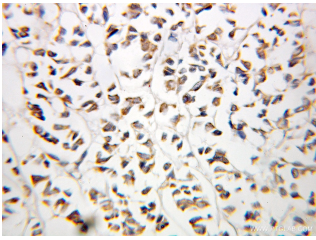
Source: Rabbit

Isotype: IgG

Synonyms:

OSTF1; FLJ20559; OSF; SH3P2;

bA235O14.1



Immunohistochemistry of paraffin-embedded human breast cancer using 10671-1-AP (OSTF1 Antibody) at Dilution 1:100 (under 25x lens)

Background

OSTF1 (Osteoclast-stimulating factor-1) is an intracellular protein produced by osteoclasts that indirectly induces osteoclast formation and bone resorption. It induces bone resorption, acting probably through a signaling cascade which results in the secretion of factor(s) enhancing osteoclast formation and activity

Applications

Tested applications:	ELISA, IHC
Species specificity:	Human, mouse, rat; other species not tested.
Calculated OSTF1 MW:	28kd
Observed OSTF1 MW:	28kd
Positive IHC detected in:	Human breast cancer
Recommended dilution:	IHC: 1:50-1:200

Application key: WB = Western blotting, IHC = Immunohistochemistry, IF = Immunofluorescence, IP = Immunoprecipitation, FC = Flow cytometry

Immunogen information

Immunogen:	Ag1072
GenBank accession number:	BC007459
Gene ID (NCBI):	26578
Full name:	Osteoclast stimulating factor 1

Product information

Purification method:	Antigen affinity purification
Storage:	PBS with 0.1% sodium azide and 50% glycerol pH 7.3. Store at -20°C.