

PRCC Polyclonal Antibody

Catalog number: 12019-1-AP

Size: 36 µg/150 µl

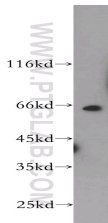
Source: Rabbit

Isotype: IgG

Synonyms:

PRCC; PRCC, Proline rich

protein PRCC, RCCP1, TPRC



HeLa cells were subjected to SDS PAGE followed by western blot with 12019-1-AP (PRCC antibody) at dilution of 1:500

Background

PRCC, also named as, TPRC, regulate cell cycle progression through interaction with MAD2L2. It is frequently found in papillary renal cell carcinoma. Endogenous PRCC is coimmunoprecipitated by antibodies that recognize a variety of pre-mRNA splicing factors including SC35, PRL1 and CDC5.

Applications

Tested applications:	ELISA, WB
Species specificity:	Human; other species not tested.
Calculated PRCC MW:	491aa, 52 kDa
Observed PRCC MW:	66 kDa
Positive WB detected in:	HeLa cells
Recommended dilution:	WB: 1:200-1:2000

Application key: WB = Western blotting, IHC = Immunohistochemistry, IF = Immunofluorescence, IP = Immunoprecipitation

Immunogen information

Immunogen:	Ag2638
GenBank accession number:	BC010450
Gene ID (NCBI):	5546
Full name:	Papillary renal cell carcinoma (translocation-associated)

Product information

Purification method:	Antigen affinity purification
Storage:	PBS with 0.1% sodium azide and 50% glycerol pH 7.3. Store at -20°C.