

TBX6 Polyclonal Antibody

Catalog number: 12447-1-AP

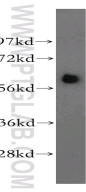
Size: 33 µg/150 µl

Source: Rabbit

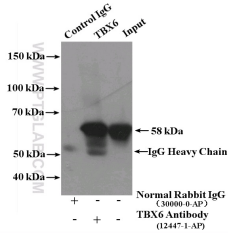
Isotype: IgG

Synonyms:

TBX6; DFNB67, T box 6, T box protein 6, TBX6



HeLa cells were subjected to SDS PAGE followed by western blot with 12447-1-AP(TBX6 antibody) at dilution of 1:800



IP Result of anti-TBX6 (IP:12447-1-AP, 4ug; Detection:12447-1-AP 1:500) with human placenta tissue lysate 2800ug.

Applications

Tested applications:	ELISA, WB, IP
Species specificity:	Human, Mouse, Rat; other species not tested.
Calculated TBX6 MW:	436aa, 47 kDa
Observed TBX6 MW:	58 kDa
Positive WB detected in:	HeLa cells, A375 cells, A549 cells, human lung tissue, human placenta tissue, Raji cells
Positive IP detected in:	Human placenta tissue
Recommended dilution:	WB: 1:500-1:5000 IP: 1:200-1:2000

Application key: WB = Western blotting, IHC = Immunohistochemistry, IF = Immunofluorescence, IP = Immunoprecipitation

Immunogen information

Immunogen:	Ag3050
GenBank accession number:	BC026031
Gene ID (NCBI):	6911
Full name:	T-box 6

Product information

Purification method:	Antigen affinity purification
Storage:	PBS with 0.1% sodium azide and 50% glycerol pH 7.3. Store at -20°C.