

## CYPC Polyclonal Antibody

Catalog number: 10287-2-AP

Size: 45 µg/150 µl

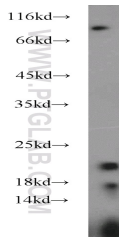
Source: Rabbit

Isotype: IgG

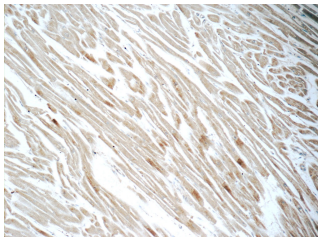
Synonyms:

PPIC; Cyclophilin C, CYPC,

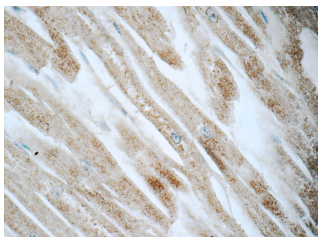
PPase C, PPIC, Rotamase C



HEK-293 cells were subjected to SDS PAGE followed by western blot with 10287-2-AP (CYPC antibody) at dilution of 1:1000



Immunohistochemistry of paraffin-embedded human heart tissue slide using 10287-2-AP (CYPC Antibody) at dilution of 1:50 (under 10x lens)



Immunohistochemistry of paraffin-embedded human heart tissue slide using 10287-2-AP (CYPC Antibody) at dilution of 1:50 (under 40x lens)

### Background

Cyclophilin C also named as peptidyl-prolyl cis-trans isomerase C (PPIC), catalyze the cis-trans isomerization of proline imidic peptide bonds in oligopeptides and accelerate the folding of proteins. Similar to other PPIases, this protein can bind immunosuppressant cyclosporin A. It is expressed most highly in the kidney and can be detected in activated T cells (PMID:1652374).

### Applications

Tested applications:	ELISA, WB, IHC
Cited applications:	WB
Species specificity:	Human, Mouse, Rat; other species not tested.
Cited species:	Human
Calculated CYPC MW:	23 kDa
Observed CYPC MW:	23 kDa
Positive WB detected in	HEK-293 cells, human heart tissue, mouse heart tissue
Positive IHC detected in	Human heart tissue, mouse kidney tissue
Recommended dilution:	WB: 1:500-1:5000 IHC: 1:20-1:200

Application key: WB = Western blotting, IHC = Immunohistochemistry, IF = Immunofluorescence, IP = Immunoprecipitation

### Immunogen information

Immunogen:	Ag0209
GenBank accession number:	BC002678
Gene ID (NCBI):	5480
Full name:	Peptidylprolyl isomerase C (cyclophilin C)

### Product information

Purification method:	Antigen affinity purification
Storage:	PBS with 0.1% sodium azide and 50% glycerol pH 7.3. Store at -20°C.