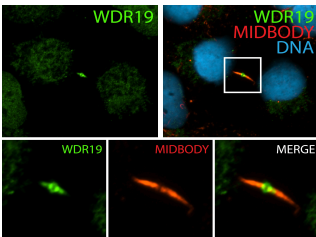
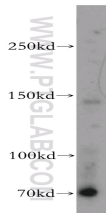


WDR19/IFT144 Polyclonal Antibody

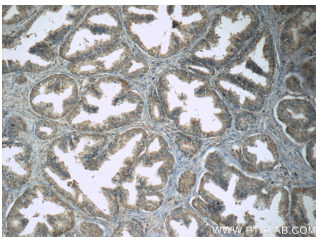
Catalog number: 13647-1-AP
Size: 43 µg/150 µl
Source: Rabbit
Isotype: IgG
Synonyms:
WDR19; FLJ23127, IFT144,
KIAA1638, ORF26, PWDMP,
WD repeat domain 19, WDR19



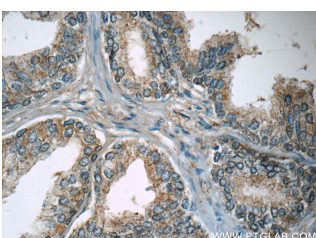
IF result (ocalization near the Fleming body) of anti-WDR19 (13647-1-AP, 1:50) with telophase hTERT-RPE1 cells (MeOH fixed) by Dr. Moshe Kim.



HEK-293 cells were subjected to SDS PAGE followed by western blot with 13647-1-AP(WDR19 antibody) at dilution of 1:600



Immunohistochemistry of paraffin-embedded human prostate hyperplasia tissue slide using 13647-1-AP (WDR19 Antibody) at dilution of 1:50



Immunohistochemistry of paraffin-embedded human

Applications

Tested applications:	ELISA, WB, IF, IHC, IP
Cited applications:	IF
Species specificity:	Human, Mouse, Rat; other species not tested.
Cited species:	Mouse
Calculated WDR19/IFT144	1342aa, 152 kDa
MW:	
Observed WDR19/IFT144	145-152kd
MW:	
Positive WB detected in	HEK-293 cells
Positive IP detected in	HEK-293 cells
Positive IHC detected in	Human prostate hyperplasia tissue, human prostate cancer tissue
Positive IF detected in	HTERT-RPE1 cells
Recommended dilution:	WB: 1:200-1:2000 IP: 1:200-1:2000 IHC: 1:20-1:200 IF: 1:20-1:200

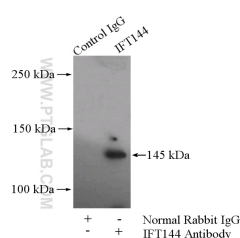
Application key: WB = Western blotting, IHC = Immunohistochemistry, IF = Immunofluorescence, IP = Immunoprecipitation

Immunogen information

Immunogen:	Ag4599
GenBank accession number:	BC032578
Gene ID (NCBI):	57728
Full name:	WD repeat domain 19

Product information

Purification method:	Antigen affinity purification
Storage:	PBS with 0.02% sodium azide and 50% glycerol pH 7.3. Store at -20°C.



IP Result of anti-WDR19 (IP:13647-1-AP, 4µg;

prostate hyperplasia tissue Detection:13647-1-AP 1:500)
slide using 13647-1-AP with HEK-293 cells lysate
(WDR19 Antibody) at dilution 3200ug.
of 1:50