

ARMCX2 Polyclonal Antibody

Catalog number: 12200-1-AP

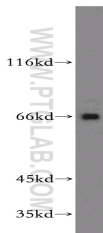
Size: 38 µg/150 µl

Source: Rabbit

Isotype: IgG

Synonyms:

ARMCX2; ALEX2, ARMX2,
KIAA0512, Protein ALEX2



HEK-293 cells were subjected to SDS PAGE followed by western blot with 12200-1-AP (ARMCX2 antibody) at dilution of 1:1000

Applications

Tested applications:	ELISA, WB
Species specificity:	Human, Mouse, Rat; other species not tested.
Calculated ARMX2 MW:	632aa, 66 kDa
Observed ARMX2 MW:	66 kDa
Positive WB detected in	HEK-293 cells, mouse brain tissue, mouse liver tissue, mouse testis tissue
Recommended dilution:	WB: 1:1000-1:10000

Application key: WB = Western blotting, IHC = Immunohistochemistry, IF = Immunofluorescence, IP = Immunoprecipitation

Immunogen information

Immunogen:	Ag2839
GenBank accession number:	BC015926
Gene ID (NCBI):	9823
Full name:	Armadillo repeat containing, X-linked 2

Product information

Purification method:	Antigen affinity purification
Storage:	PBS with 0.1% sodium azide and 50% glycerol pH 7.3. Store at -20°C.