

## PKC delta Polyclonal Antibody

Catalog number: 14188-1-AP

Size: 23 µg/150 µl

Source: Rabbit

Isotype: IgG

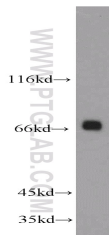
Synonyms:

PRKCD; MAY1, PKC delta,  
PKCD, PRKCD, Protein kinase C  
delta type, protein kinase C,  
delta

### Applications

Tested applications:	ELISA, WB, IP
Species specificity:	Human, Mouse, Rat; other species not tested.
Calculated PKC delta MW:	78 kDa
Observed PKC delta MW:	70-80 kDa
Positive WB detected in	Mouse brain tissue
Positive IP detected in	Mouse brain tissue
Recommended dilution:	WB: 1:500-1:5000 IP: 1:1000-1:10000

Application key: WB = Western blotting, IHC = Immunohistochemistry, IF = Immunofluorescence, IP = Immunoprecipitation



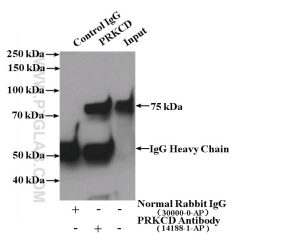
mouse brain tissue were subjected to SDS PAGE followed by western blot with 14188-1-AP (PRKCD antibody) at dilution of 1:2000

### Immunogen information

Immunogen:	Ag5473
GenBank accession number:	BC043350
Gene ID (NCBI):	5580
Full name:	Protein kinase C, delta

### Product information

Purification method:	Antigen affinity purification
Storage:	PBS with 0.02% sodium azide and 50% glycerol pH 7.3. Store at -20°C.



IP Result of anti-PRKCD (IP:14188-1-AP, 4µg; Detection:14188-1-AP 1:2000) with mouse brain tissue lysate 4000µg.