

KLHDC3 Polyclonal Antibody

Catalog number: 13905-1-AP

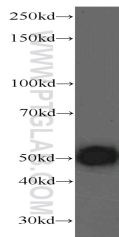
Size: 78 µg/150 µl

Source: Rabbit

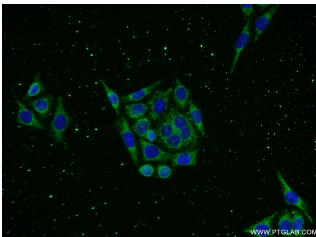
Isotype: IgG

Synonyms:

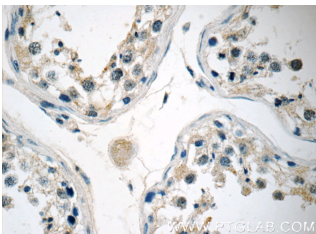
KLHDC3; dJ20C7.3, hPEAS,
kelch domain containing 3,
KLHDC3, PEAS, Protein Peas,
RP1 20C7.3



mouse testis tissue were subjected to SDS PAGE followed by western blot with 13905-1-AP(KLHDC3 antibody) at dilution of 1:1500



Immunofluorescent analysis of PC-3 cells using 13905-1-AP(KLHDC3 Antibody) at dilution of 1:50 and Alexa Fluor 488-conjugated AffiniPure Goat Anti-Rabbit IgG(H+L)



Immunohistochemistry of paraffin-embedded human testis tissue slide using 13905-1-AP(KLHDC3 Antibody) at dilution of 1:50 (under 40x lens)

Background

The BTB (Broad-Complex, Tramtrack and Bric a brac) domain, also known as the POZ (Poxvirus and Zinc finger) domain, is an N-terminal homodimerization domain that contains multiple copies of kelch repeats and/or C2H2-type zinc fingers. Proteins that contain BTB domains are thought to be involved in transcriptional regulation via control of chromatin structure and function. The Kelch domain-containing protein 3 (KLHDC3), also designated PEAS, contains 5 Kelch repeats and may be involved in meiotic recombination process. The gene encoding KLHDC3 maps to chromosome 6, which contains around 1,200 genes within 170 million base pairs of sequence. Deletion of a portion of the q arm of chromosome 6 is associated with early onset intestinal cancer suggesting the presence of a cancer susceptibility locus. Porphyria cutanea tarda, Parkinson's disease, Stickler syndrome, 21-hydroxylase deficiency and maple syrup urine disease are also associated with genes on chromosome 6. KLHDC3 protein is mainly expressed in cytoplasm, also found in meiotic chromatin. This antibody specifically reacts with the 55kd KLHDC3 protein.

Applications

Tested applications:	ELISA, WB, IHC, IF
Species specificity:	Human, Mouse, Rat; other species not tested.
Calculated KLHDC3 MW:	382aa, 43 kDa
Observed KLHDC3 MW:	50 kDa
Positive WB detected in	Mouse testis tissue, PC-3 cells, rat testis tissue
Positive IHC detected in	Human testis tissue
Positive IF detected in	PC-3 cells
Recommended dilution:	WB: 1:500-1:5000 IHC: 1:20-1:200 IF: 1:20-1:200

Application key: WB = Western blotting, IHC = Immunohistochemistry, IF = Immunofluorescence, IP = Immunoprecipitation

Immunogen information

Immunogen:	Ag4879
GenBank accession number:	BC041793
Gene ID (NCBI):	116138
Full name:	Kelch domain containing 3

Product information

Purification method:	Antigen affinity purification
Storage:	PBS with 0.1% sodium azide and 50% glycerol pH 7.3. Store at -20°C.