

## GIMAP2 Polyclonal Antibody

Catalog number: 13445-1-AP

Size: 35 µg/150 µl

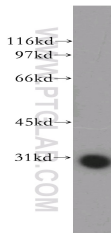
Source: Rabbit

Isotype: IgG

Synonyms:

GIMAP2; DKFZp586D0824;

HIMAP2; IMAP2; MGC24275



human heart tissue were subjected to SDS PAGE followed by western blot with 13445-1-AP(GIMAP2 Antibody) at dilution of 1:800

### Background

This protein was not eliminated clearly. It belongs to GTPase of the immunity-associated protein family. One of its homologous protein, GIMAP1, runs as a 30kd protein in SDS-PAGE, lower than the calculated molecular weight. This antibody detected one 28kd band in several tissues.

### Applications

Tested applications:	ELISA, WB
Species specificity:	Human; other species not tested.
Positive WB detected in:	Human heart tissue, human kidney tissue
Calculated GIMAP2 MW:	337aa,38kd
Observed GIMAP2 MW:	28kd
Recommended dilution:	WB: 1:200-1:2000

Application key: WB = Western blotting, IHC = Immunohistochemistry, IF = Immunofluorescence, IP = Immunoprecipitation, FC = Flow cytometry

### Immunogen information

Immunogen:	Ag4273
GenBank accession number:	BC032345
Gene ID (NCBI):	26157
Full name:	GTPase, IMAP family member 2

### Product information

Purification method:	Antigen affinity purification
Storage:	PBS with 0.02% sodium azide and 50% glycerol pH 7.3. Store at -20°C.