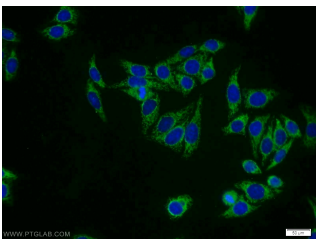
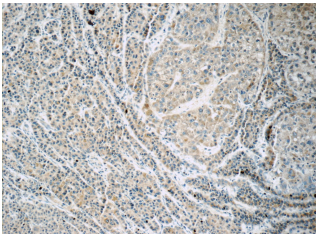


FREM1 Polyclonal Antibody

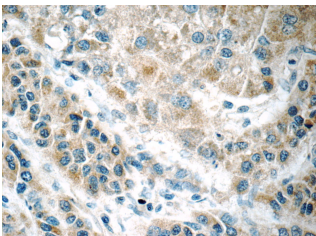
Catalog number: 13086-1-AP
Size: 20 µg/150 µl
Source: Rabbit
Isotype: IgG
Synonyms:
FREM1; C9orf143, C9orf145,
C9orf154, FLJ25461, FREM1,
Protein QBRICK, QBRICK, RP11
439N12.3



Immunofluorescent analysis of HepG2 cells using 13086-1-AP (FREM1 Antibody) at dilution of 1:25 and Alexa Fluor 488-conjugated AffiniPure Goat Anti-Rabbit IgG(H+L)



Immunohistochemistry of paraffin-embedded human liver cancer tissue slide using 13086-1-AP (FREM1 Antibody) at dilution of 1:50 (under 10x lens)



Immunohistochemistry of paraffin-embedded human liver cancer tissue slide using 13086-1-AP (FREM1 Antibody) at dilution of 1:50 (under 40x lens)

Background

FREM1, C9orf143, C9orf145, C9orf154 and QBRICK, is an extracellular matrix protein that plays a role in epidermal differentiation and is required for epidermal adhesion during embryonic development. This antibody recognizes isoform 1 (244 kDa), isoform 2 (80 kDa) and isoform 3 (43 kDa).

Applications

Tested applications:	ELISA, WB, IHC, IF
Species specificity:	Human; other species not tested.
Calculated FREM1 MW:	2179aa, 244 kDa; 149.3 kDa
Observed FREM1 MW:	40-43 kDa; 70-80 kDa
Positive WB detected in	Human plasma tissue, HepG2 cells
Positive IHC detected in	Human liver cancer tissue, human breast cancer tissue
Positive IF detected in	HepG2 cells
Recommended dilution:	WB: 1:200-1:1000 IHC: 1:20-1:200 IF: 1:10-1:100

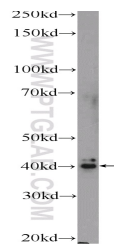
Application key: WB = Western blotting, IHC = Immunohistochemistry, IF = Immunofluorescence, IP = Immunoprecipitation

Immunogen information

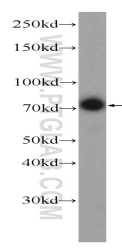
Immunogen:	Ag3617
GenBank accession number:	BC031064
Gene ID (NCBI):	158326
Full name:	FRAS1 related extracellular matrix 1

Product information

Purification method:	Antigen affinity purification
Storage:	PBS with 0.1% sodium azide and 50% glycerol pH 7.3. Store at -20°C.



human plasma tissue were
 subjected to SDS PAGE
 followed by western blot with
 13086-1-AP(FREM1
 Antibody) at dilution of 1:300



HepG2 cells were subjected to
 SDS PAGE followed by
 western blot with 13086-1-
 AP(FREM1 Antibody) at
 dilution of 1:300