

CYP46A1 Polyclonal Antibody

Catalog number: 12486-1-AP

Size: 42 µg/150 µl

Source: Rabbit

Isotype: IgG

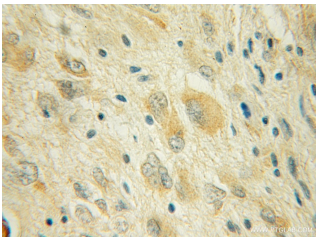
Synonyms:

CYP46A1; CH24H, Cholesterol

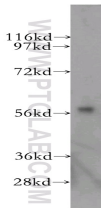
24 hydroxylase, CP46, CYP46,

CYP46A1, Cytochrome P450

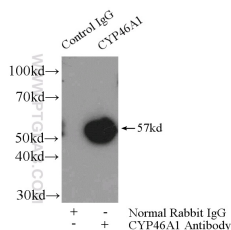
46A1



Immunohistochemical of paraffin-embedded human gliomas using 12486-1-AP(CYP46A1 antibody) at dilution of 1:50 (under 10x lens)



human brain tissue were subjected to SDS PAGE followed by western blot with 12486-1-AP(CYP46A1 antibody) at dilution of 1:500



IP Result of anti-CYP46A1 (IP:12486-1-AP, 4ug; Detection:12486-1-AP 1:500) with mouse brain tissue lysate 3200ug.

Background

CYP46A1, also named as CYP46, P450 46A1, CH24H and Cholesterol 24-hydroxylase, belongs to the cytochrome P450 family. It is involved in the turnover of cholesterol. It converts cholesterol into 24S-hydroxycholesterol and, to a lesser extent, 25-hydroxycholesterol. CYP46A1 is significantly upregulated in hepatic lymphomyeloid cells compared with ESCs.(PMID:20039312)

Applications

Tested applications:	ELISA, WB, IHC, IP
Cited applications:	WB
Species specificity:	Human, Mouse, Rat; other species not tested.
Cited species:	Human, mouse
Calculated CYP46A1 MW:	500aa, 57 kDa
Observed CYP46A1 MW:	57 kDa
Positive WB detected in	Human brain tissue, mouse brain tissue
Positive IP detected in	Mouse brain tissue
Positive IHC detected in	Human gliomas tissue, mouse brain tissue
Recommended dilution:	WB: 1:200-1:2000
	IP: 1:200-1:2000
	IHC: 1:20-1:200

Application key: WB = Western blotting, IHC = Immunohistochemistry, IF = Immunofluorescence, IP = Immunoprecipitation

Immunogen information

Immunogen:	Ag3116
GenBank accession number:	BC022539
Gene ID (NCBI):	10858
Full name:	Cytochrome P450, family 46, subfamily A, polypeptide 1

Product information

Purification method:	Antigen affinity purification
Storage:	PBS with 0.1% sodium azide and 50% glycerol pH 7.3. Store at -20°C.