

## MRPL23 Polyclonal Antibody

Catalog number: 11706-1-AP

Size: 26 µg/150 µl

Source: Rabbit

Isotype: IgG

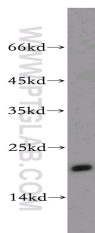
Synonyms:

MRPL23; FLJ45387, L23MRP,

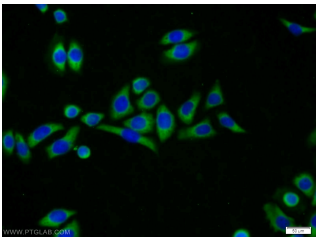
L23mt, MRP L23, MRPL23,

Ribosomal protein L23 like,

RPL23, RPL23L



A2780 cells were subjected to SDS PAGE followed by western blot with 11706-1-AP(MRPL23 antibody) at dilution of 1:100



Immunofluorescent analysis of PC-3 cells using 11706-1-AP( MRPL23 Antibody) at dilution of 1:25 and Alexa Fluor 488-conjugated AffiniPure Goat Anti-Rabbit IgG(H+L)

### Applications

Tested applications:	ELISA, WB, IF
Species specificity:	Human; other species not tested.
Calculated MRPL23 MW:	153aa,18 kDa
Observed MRPL23 MW:	18kd
Positive WB detected in	A2780 cells, HEK-293 cells, HeLa cells, MCF7 cells, PC-3 cells
Positive IF detected in	PC-3 cells, MCF-7 cells
Recommended dilution:	WB: 1:200-1:2000 IF: 1:10-1:100

Application key: WB = Western blotting, IHC = Immunohistochemistry, IF = Immunofluorescence, IP = Immunoprecipitation

### Immunogen information

Immunogen:	Ag2220
GenBank accession number:	BC027710
Gene ID (NCBI):	6150
Full name:	Mitochondrial ribosomal protein L23

### Product information

Purification method:	Antigen affinity purification
Storage:	PBS with 0.02% sodium azide and 50% glycerol pH 7.3. Store at -20°C.