

## COTL1 Polyclonal Antibody

Catalog number: 10781-1-AP

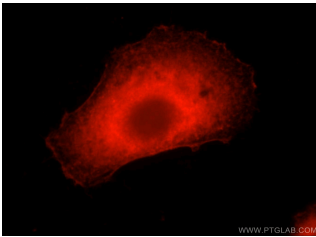
Size: 52 µg/150 µl

Source: Rabbit

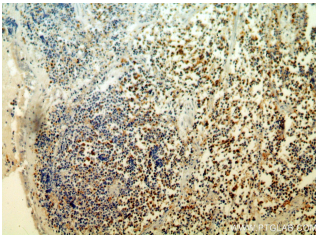
Isotype: IgG

Synonyms:

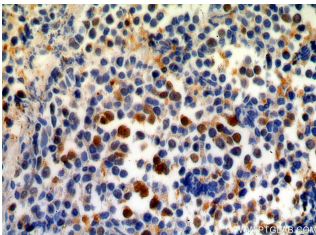
COTL1; CLP, Coactosin like protein, COTL1, FLJ43657



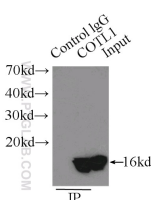
Immunofluorescent analysis of HepG2 cells, using COTL1 antibody 10781-1-AP at 1:50 dilution and Rhodamine-labeled goat anti-rabbit IgG (red).



Immunohistochemical of paraffin-embedded human lung cancer using 10781-1-AP(COTL1 antibody) at dilution of 1:50 (under 10x lens)



Immunohistochemical of paraffin-embedded human lung cancer using 10781-1-AP(COTL1 antibody) at dilution of 1:50 (under 40x lens)



IP Result of anti-COTL1  
(IP:10781-1-AP, 3µg;  
Detection:10781-1-AP 1:3000)

### Background

COTL1, also named as CLP, binds to F-actin in a calcium-independent manner. And it has no direct effect on actin depolymerization.

### Applications

Tested applications:	ELISA, WB, IHC, IF, IP
Cited applications:	IHC, WB
Species specificity:	Human, Mouse, Rat; other species not tested.
Cited species:	Human
Calculated COTL1 MW:	16 kDa
Observed COTL1 MW:	16 kDa
Positive WB detected in	Mouse brain tissue, HEK-293 cells, HeLa cells, human brain tissue, human kidney tissue, human placenta tissue, mouse placenta tissue, rat brain tissue
Positive IP detected in	Mouse kidney tissue
Positive IHC detected in	Human lung cancer tissue, human kidney tissue
Positive IF detected in	HepG2 cells
Recommended dilution:	WB: 1:500-1:5000 IP: 1:1000-1:10000 IHC: 1:20-1:200 IF: 1:20-1:200

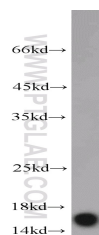
Application key: WB = Western blotting, IHC = Immunohistochemistry, IF = Immunofluorescence, IP = Immunoprecipitation

### Immunogen information

Immunogen:	Ag1230
GenBank accession number:	BC010884
Gene ID (NCBI):	23406
Full name:	Coactosin-like 1 (Dictyostelium)

### Product information

Purification method:	Antigen affinity purification
Storage:	PBS with 0.1% sodium azide and 50% glycerol pH 7.3. Store at -20°C.



mouse brain tissue were  
subjected to SDS PAGE  
followed by western blot with

with mouse kidney tissue  
lysate 12500ug.

10781-1-AP(COTL1 antibody)  
at dilution of 1:1000