

## ATP6V1E2 Polyclonal Antibody

Catalog number: 13235-1-AP

Size: 40 µg/150 µl

Source: Rabbit

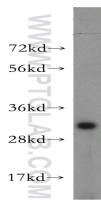
Isotype: IgG

Synonyms:

ATP6V1E2; ATP6E1, ATP6EL2,

ATP6V1E2, ATP6V1EL2, V

ATPase subunit E 2, VMA4



mouse brain tissue were subjected to SDS PAGE followed by western blot with 13235-1-AP(ATP6V1E2 antibody) at dilution of 1:400

### Applications

Tested applications:	ELISA, WB
Species specificity:	Human,Mouse,Rat; other species not tested.
Calculated ATP6V1E2 MW:	226aa,26 kDa
Observed ATP6V1E2 MW:	31-33kd
Positive WB detected in	Mouse brain tissue, MCF7 cells
Recommended dilution:	WB: 1:200-1:2000

Application key: WB = Western blotting, IHC = Immunohistochemistry, IF = Immunofluorescence, IP = Immunoprecipitation

### Immunogen information

Immunogen:	Ag4088
GenBank accession number:	BC034808
Gene ID (NCBI):	90423
Full name:	ATPase, H+ transporting, lysosomal 31kDa, V1 subunit E2

### Product information

Purification method:	Antigen affinity purification
Storage:	PBS with 0.02% sodium azide and 50% glycerol pH 7.3. Store at -20°C.