

## CSRP3 Polyclonal Antibody

Catalog number: 10721-1-AP

Size: 30 µg/150 µl

Source: Rabbit

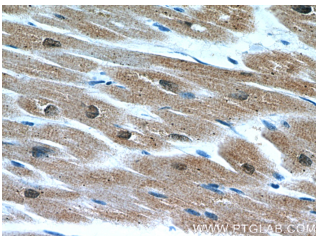
Isotype: IgG

Synonyms:

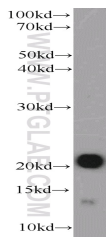
CSRP3; Cardiac LIM protein, CLP, CMD1M, CMH12, CRP3, CSRP3, Cysteine rich protein 3, LIM domain protein, cardiac, LMO4, MLP, Muscle LIM protein



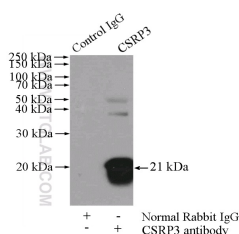
Immunohistochemical of paraffin-embedded human heart using 10721-1-AP(CSRP3 antibody) at dilution of 1:50 (under 10x lens)



Immunohistochemical of paraffin-embedded human heart using 10721-1-AP(CSRP3 antibody) at dilution of 1:50 (under 40x lens)



mouse heart tissue were subjected to SDS PAGE followed by western blot with 10721-1-AP(CSRP3 antibody) at dilution of 1:2000



### Applications

Tested applications:	ELISA, WB, IHC, IP
Species specificity:	Human, Mouse, Rat; other species not tested.
Calculated CSRP3 MW:	21 kDa
Observed CSRP3 MW:	21 kDa
Positive WB detected in	Mouse heart tissue, human heart tissue
Positive IP detected in	Mouse heart tissue
Positive IHC detected in	Human heart tissue, human pancreas cancer tissue
Recommended dilution:	WB: 1:500-1:5000
	IP: 1:1000-1:10000
	IHC: 1:20-1:200

Application key: WB = Western blotting, IHC = Immunohistochemistry, IF = Immunofluorescence, IP = Immunoprecipitation

### Immunogen information

Immunogen:	Ag1136
GenBank accession number:	BC005900
Gene ID (NCBI):	8048
Full name:	Cysteine and glycine-rich protein 3 (cardiac LIM protein)

### Product information

Purification method:	Antigen affinity purification
Storage:	PBS with 0.1% sodium azide and 50% glycerol pH 7.3. Store at -20°C.

**IP Result of anti-CSR3**  
**(IP:10721-1-AP, 4ug;**  
**Detection:10721-1-AP 1:2000)**  
**with mouse heart tissue lysate**  
**4000ug.**