

PREB Polyclonal Antibody

Catalog number: 10146-2-AP

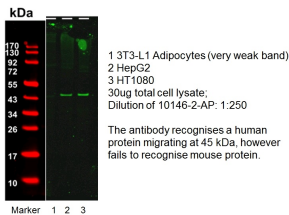
Size: 59 µg/150 µl

Source: Rabbit

Isotype: IgG

Synonyms:

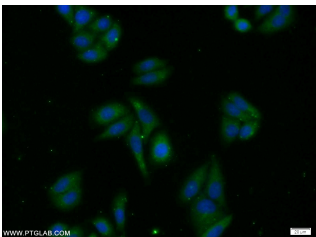
PREB; PREB, SEC12



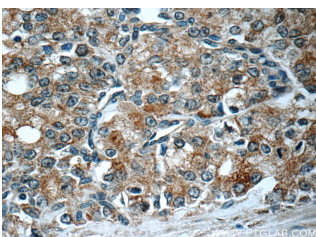
WB result of anti-PREB (10146-2-AP, 1:250) with HepG2 and HT1080 by Dr. Dzmityr Batrakou.



SKOV-3 cells were subjected to SDS PAGE followed by western blot with 10146-2-AP (PREB antibody) at dilution of 1:600



Immunofluorescent analysis of HepG2 cells using 10146-2-AP (PREB Antibody) at dilution of 1:25 and Alexa Fluor 488-conjugated AffiniPure Goat Anti-Rabbit IgG(H+L)



Immunohistochemistry of paraffin-embedded human prostate cancer tissue slide using 10146-2-AP (PREB

Background

PREB contains two PQ-rich potential transactivation domains, but no apparent DNA-binding motif, and exhibits sequence-specific binding to Pit1-binding element of the prolactin (PRL) promoter. It may act as a transcriptional regulator and is thought to be involved in some of the developmental abnormalities observed in patients with partial trisomy 2p.

Applications

Tested applications:

ELISA, WB, IHC, IF

Species specificity:

Human, Mouse; other species not tested.

Calculated PREB MW:

45 kDa

Observed PREB MW:

45 kDa

Positive WB detected in

SKOV-3 cells, 3T3-L1 cells, HepG2 cells, HT-1080 cells

Positive IHC detected in

Human prostate cancer tissue, human ovary tumor tissue

Positive IF detected in

HepG2 cells

Recommended dilution:

WB: 1:200-1:2000

IHC: 1:20-1:200

IF: 1:10-1:100

Application key: WB = Western blotting, IHC = Immunohistochemistry, IF = Immunofluorescence, IP = Immunoprecipitation

Immunogen information

Immunogen:

Ag0202

GenBank accession number:

BC002765

Gene ID (NCBI):

10113

Full name:

Prolactin regulatory element binding

Product information

Purification method:

Antigen affinity purification

Storage:

PBS with 0.1% sodium azide and 50% glycerol pH 7.3. Store at -20°C.

**Antibody) at dilution of 1:50
(under 40x lens)**