

CUGBP1 Polyclonal Antibody

Catalog number: 13002-1-AP

Size: 56 µg/150 µl

Source: Rabbit

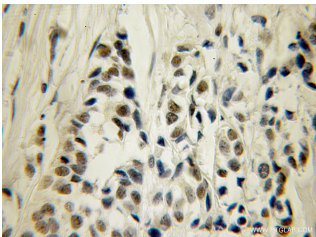
Isotype: IgG

Synonyms:

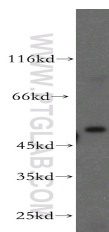
CUGBP1; Bruno like protein 2, BRUNOL2, CELF 1, CELF1, CUG BP, CUG BP1, CUGBP, CUGBP1, Deadenylation factor CUG BP, EDEN BP homolog, hNab50, NAB50, RNA binding protein BRUNOL 2



Immunofluorescent analysis of HeLa cells, using CUGBP1 antibody 13002-1-AP at 1:50 dilution and FITC-labeled donkey anti-rabbit IgG (green). Blue pseudocolor = DAPI (fluorescent DNA dye).



Immunohistochemical of paraffin-embedded human breast cancer using 13002-1-AP (CUGBP1 antibody) at dilution of 1:100 (under 10x lens)



HeLa cells were subjected to SDS PAGE followed by western blot with 13002-1-AP (CUGBP1 antibody) at dilution of 1:200

Applications

| | |
|--------------------------|---|
| Tested applications: | ELISA, WB, IHC, IF, IP |
| Cited applications: | IHC |
| Species specificity: | Human, Mouse, Rat; other species not tested. |
| Cited species: | Mouse |
| Calculated CUGBP1 MW: | 483aa, 52 kDa |
| Observed CUGBP1 MW: | 51-55kd |
| Positive WB detected in | HeLa cells, HL-60 cells, HT-1080 cells, NIH/3T3 cells |
| Positive IP detected in | HeLa cells |
| Positive IHC detected in | Human breast cancer tissue, human skin cancer tissue, human testis tissue |
| Positive IF detected in | HeLa cells |
| Recommended dilution: | WB: 1:200-1:2000 IP: 1:200-1:2000 IHC: 1:20-1:200 IF: 1:20-1:200 |

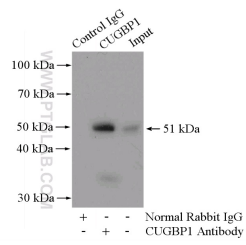
Application key: WB = Western blotting, IHC = Immunohistochemistry, IF = Immunofluorescence, IP = Immunoprecipitation

Immunogen information

| | |
|---------------------------|---|
| Immunogen: | Ag3677 |
| GenBank accession number: | BC031079 |
| Gene ID (NCBI): | 10658 |
| Full name: | CUG triplet repeat, RNA binding protein 1 |

Product information

| | |
|----------------------|--|
| Purification method: | Antigen affinity purification |
| Storage: | PBS with 0.02% sodium azide and 50% glycerol pH 7.3. Store at -20°C. |



IP Result of anti-CUGBP1
(IP:13002-1-AP, 4ug;
Detection:13002-1-AP 1:500)
with HeLa cells lysate 3200ug.